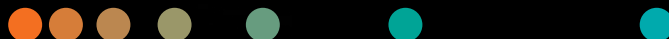


# Accessories for urology

➤ [siemens-healthineers.us/urology](https://siemens-healthineers.us/urology)







### Ordering instructions

There are three ways to order your accessories:

- Orange: Provide the Accessories Sales part number
- ◆ Black: Provide the Service part number
- Blue: Provide the Factory Sales part number

Please see the "How to order" instructions starting on page 21-23 and follow them every time you place an order.



*The consistent use of appropriate accessories supports physicians and their teams during urological diagnosis and urological therapeutic applications.*

*In addition, these aids enhance system ergonomics, improve image quality, reduce patient radiation exposure, facilitate examination routines and provide both the patient and the examiner with a high degree of comfort.*

## Accessories for urology

### Patient support

Holders, supports, and handgrips, etc. provide patients with a sense of security and enhance patient comfort during positioning.

### Patient comfort

Many positioning aids are available to make exams and procedures comfortable for patients and physicians. Comfortable positioning accounts for the anatomical condition of each patient, provides a comfortable working environment, and accelerates workflow.

### Image quality and radiation reduction

Special equipment directly in the examination unit reduces the amount of unnecessary radiation exposure and, at the same time, enables a comfortable and ergonomic examination procedure.

## Contents

Table accessories	4
System operation	13
Endoscopy accessories	15
Miscellaneous	17
How to order	21

## Table accessories

### ● Kyra Cysto Knee Crutch (recommended)

Accessory No. KTEK3705

Cysto Lift Knee Crutch helps neutralize leg weight, allowing the surgeon to move the leg to the desired position and can accommodate patients that are up to 500 lbs. in weight. The lightweight molded crutches have soft pads that protect the patient's legs. The comfortable squeeze grips permit easy intra-operative adjustment of leg positions for optimal surgical site exposure. Once the patient is positioned, simply release the handle to lock leg position.

Requires two clamps:

- KTEK4200 – Kyra Secure Release Clamp – Quantity: 1
- KTEK4710 – Kyra Simple Blade Rail Clamp – Quantity: 1



### ■ Amatech leg support (pair)

Factory no. 07443091

### ● Cysto lift knee crutch

Accessory no. AMFCLKSMNS

Cysto Lift Knee Crutch helps neutralize leg weight, allowing the surgeon to move the leg to the desired position and can accommodate patients that are up to 500 lbs in weight. The lightweight molded crutches have soft pads that protect the patient's legs. The comfortable squeeze grips permit easy intra-operative adjustment of leg positions for optimal surgical site exposure. Once the patient is positioned, simply release the handle to lock leg position.

Clamps and pad set are included with the purchase of the Cysto Lift Knee Crutch.

Extra table clamps can be purchased using this part number:

- AMFRC2XUKA3 – Blade Clamp – Urooskop
- Replacement pads for AMCLKSMNS can be purchased using this part number: AMOKCPP



## Table accessories

### ● Kyra Comfort TM 800 Stirrup

Accessory no. KTEK8100

Kyra KTEK Comfort™ 800 Stirrup, 1 pair

The Comfort 800 stirrup can support patients up to 363 kg (800 lbs.) weight capacity. In combination with Urooskop Omnia Max the maximum possible patient load is 272 kg.

The boots will safely accept larger legs with approx. 2.5cm of supportive boot padding.

All Comfort 800's come standard with the durable Secure-Lok straps which help reduce infection control and the patented Core-Grip technology which makes the stirrup stronger and lighter vs other stirrup brands.

Designed to improve infection control with Secure-Lok straps

Easy to clean durable silicone straps

Boots sized to fit today's larger patient anatomy

More pressure reducing padding

More working space with wider abduction range

Increased range of motion

2x Clamps are mandatory for using the stirrups. Secure-Release Clamps (KTEK4200) are recommended.



### ● Kyra Comfort TM 350 Stirrup

Accessory no. KTEK3100

Kyra KTEK Comfort™ 350 Stirrup, 1 pair

The Comfort 800 stirrup can support patients up to 363 kg (800 lbs.) weight capacity. In combination with Urooskop Omnia Max the maximum possible patient load is 272 kg.

The boots will safely accept larger legs with approx. 2.5cm of supportive boot padding.

All Comfort 800's come standard with the durable Secure-Lok straps which help reduce infection control and the patented Core-Grip technology which makes the stirrup stronger and lighter vs other stirrup brands.

Designed to improve infection control with Secure-Lok straps

Easy to clean durable silicone straps

Boots sized to fit today's larger patient anatomy

More pressure reducing padding

More working space with wider abduction range

Increased range of motion

2x Clamps are mandatory for using the stirrups. Secure-Release Clamps (KTEK4200) are recommended.



## Table accessories

### ■ Amatech leg holders with “piston lift”

Factory no. 07441467

### ● Amatech leg holders with “piston lift”

Accessory no. AMFLHSMNS

Leg Holders with “Piston lift” allow intra-operative positioning without side rail adjustments or compromising the sterile field. Designed for laparoscopy and other procedures requiring low lithotomy positioning. These leg holders are designed to help neutralize leg weight, allowing the surgeon to effortlessly move the leg to the desired position. They can accommodate patients who are up to 500 lbs in weight.

#### Additional features:

- The lightweight molded boots are lined with soft pads that encapsulate the foot to keep it from slipping out—even in radically elevated lithotomy positions.
- Reduces pressure under the fossa or where the peroneal nerve is superficial.
- The comfortable squeeze grips permit easy adjustment of lithotomy and abduction positions for optimal surgical site exposure.
- Once the patient is positioned, simply release the handle to secure the Leg Holders.
- Clamps and pad set are included with the purchase of the Leg Holders.

Extra table clamps can be purchased using this part number:

- AMFRC2XUKA3 – Blade Clamp – Uroskop
- Replacement pads for AMFLHSMNS can be purchased using this part number: AMFAMA62SO6S



### ● Heavy duty stirrups (720 lb)

Accessory no. AMFLH720

The Heavy Duty Stirrup has a reinforced rod and joint assembly that makes the system capable of positioning a patient weighing up to 720 lbs (327 kg). Though designed for large patients, this product is still appropriate for use with the general patient population.

- 720 lbs (327 kg) Patient Weight Capacity – Support lithotomy positioning for very large patients.
- Floating Boot – Self-adjusting boot minimizes pressure on the calf, when moving the stirrup.
- Lift-Assist – Allows easy movement of the leg when placing it in the desired position.
- Twist Release Handle – Provides easy intraoperative adjustment without compromising the sterile field. Simply twist the handle to move the leg holder in all directions.
- Lithotomy Range – Set the stirrup in any position between +84° to -33° lithotomy.
- Abduction Range – Set the stirrup in any position between +25° to -9° abduction.
- Lithotomy & Length Indicators – Help ensure precise positioning.

**Set of clamps required to be sold with the stirrups.**

Extra table clamps can be purchased using this part number AMF40041 – Easy-Lock clamps



## Table accessories

### ■ Coxafix leg support, clip-on (1 pair)

Factory no. 04459389

The leg supports can be attached anywhere along the lateral OR rails with a quick-action lock. Continuous, gas spring assisted height adjustment with self-locking spindle, padded leg rests, lockable and swivelable in 3 directions for pressure-free positioning of the legs in the knee joint.

Leg rest quick-action lock, suitable for use of the special pediatric leg rest.

Max 500 lb patient weight



### ■ Coxafix leg support (1 pair)

Factory no. 04498445

The leg supports can be attached anywhere along the lateral OR rails with a quick-action lock. Continuous, gas spring assisted height adjustment with self-locking spindle, padded leg rests, lockable and swivelable in 3 directions for pressure-free positioning of the legs in the knee joint.

Leg rest quick-action lock, suitable for use of the special pediatric leg rest.

Max 720 lb patient weight.



### ■ Child leg supports

Factory no. 04459611

For examinations of children, the adult leg rests of the Coxafix leg supports can be replaced by pediatric leg rests.





## Table accessories

---

### ◆ Cradle grey (must order 2)

Service no. 3837601

### ◆ Cradle black (must order 2)

Service no. 1668834

---

The cradles for Coxafix leg holders can be ordered separately as Service parts.

The customer does not need to replace the entire leg holder.

Two parts are available.

*We recommend the black version for its durability.*

---

### ■ Flexible patient arm rest

Factory no. 04459397

The padded arm rest allows comfortable positioning of the patient's left or right forearm.

It can be attached and locked in place anywhere along the lateral OR rails.




---

### ● Kyra Armboard

Accessory no. SEE BELOW

Armboard with trigger adjustment comes in 3 different sizes:

**Kyra Armboard with Pad 1"/2.5cm**

Accessory no. KTEK2005\_1\_S

**Kyra Armboard with Pad 2"/5cm**

Accessory no. KTEK2005\_2\_S

**Kyra Armboard with Pad 3"/7.5cm**

Accessory no. KTEK2005\_3\_S

Replacement Armboard Pad Only:

● KTEK2009 Kyra Armboard Pad 1"/2.5cm (ea)

● KTEK2010 Kyra Armboard Pad 2"/5cm (ea)

● KTEK2015 Kyra Armboard Pad 3"/7.5cm (ea)





## Table accessories

---

### ■ Lateral handgrip

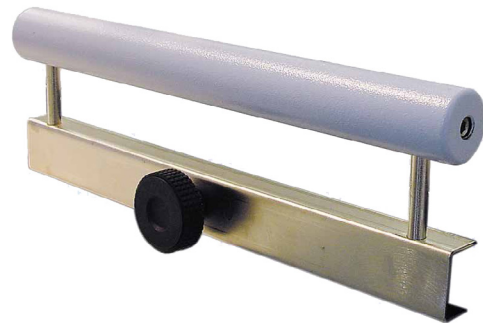
Factory no. 14428760

### ◆ Lateral handgrip

Service no. 7453926

---

Grip strip that attach anywhere along the OR rails, allowing the patient to feel more secure.



---

### ■ Shoulder supports

Factory no. 04459421

The shoulder supports allow comfortable positioning of the patient in Trendelenburg positions. The padding can be adapted to the patient's anatomy. The shoulder supports attach anywhere along the lateral OR rails.

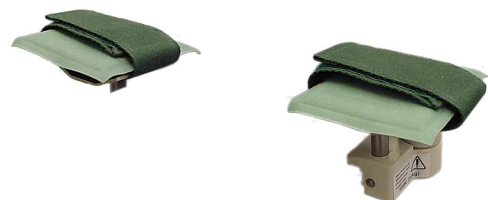


---

### ■ Hand restraints (1 pair)

Factory no. 04459512

The wrist restraints are attached to the OR rails and are used to restrain the patient's hands during an examination.



## Table accessories

---

### ■ Anesthesia bracket

Factory no. 04459413

The telescopic height-adjustable anesthesia screen holder allows the attachment of a sterile cover and mounts anywhere along the OR rails.



---

### ■ Infusion bottle holder

Factory no. 14400932

The telescopic extendable infusion bottle holder can hold up to 4 infusion bottles and attaches anywhere along the OR rails of the table.



---

### ■ Table extension 30 cm

Factory no. 04440405

Compact carbon-fiber tabletop extension with foam mattress, especially suitable for patient positioning during urodynamic examinations (attaches to head and foot end).



## Table accessories

### ■ Micturition seat, left/Micturition seat, right

Factory no. 04459371/04440447

Weight-reduced, two-part, 90° rotatable micturition seat for examinations of the patient in a seated position.

Optimized for a comfortable, low sitting height with the patient's feet on the floor during the entire examination, with moving X-ray system.

Unobstructed space under the seat for urodynamic measuring equipment. The micturition seat attaches to the horizontal patient table, max. load 136 kg (300 lbs).

**For left-hand version of the basic unit: Factory no. 04459371**

**For right-hand version of the basic unit: Factory no. 04440447**



### ■ Footboard

Factory no. 04459363

The footboard can be attached to the tabletop at the head end and facilitates radiological exposures of standing patients from the bladder up to the kidney.

Max. load 180 kg (400 lbs). 2 Handgrip strips, lateral.

Grip strips that attach anywhere along the OR rails, allowing the patient to feel more secure.



### ● Contour Fabricators Footswitch Covers

Accessory no. CF507506

Wide Footswitch cover, 24-in. x 20-in. fits with latex-free elastic cord and cinch lock, Bulk packaged, non-sterile.





---

**■ Plastic drain bags (20 pcs.)**

Factory no. 04459496

---

**● DAS drain bags (20 count)**

Accessory no. DAS\_DB1008\_S

---

**● Urology drain bags (20 count)**

Accessory no. CF507505

Urology Drain bag designed specifically for our Uroskop.  
Made of durable vinyl, this drain bag utilizes an under-buttocks flap to direct fluids into the bag. Sterile, individually pouched.

- Preferred option normally available next day ARO




---

**● Drain hoses with adapters (20 count)**

Accessory no. CF511511

Box of (20) drain hoses with adapters. Drain hoses are 72-in. long. Drain bag designed to fit Uroskop drain bags (part CF507505). This part will include 20 hoses and 20 adapters bulk packaged in a box.




---

**● Urology Collection Bag (10 count)**

Accessory no. CF505406

Designed to collect waste fluid when a floor drain or suction is not available. Internal baffle system enables the container to fill evenly as powder converts liquid to gel. Built-in handles allow the unit to be easily carried to disposal. 5-gallon capacity. Compatible with urology drain bags (Part number CF507505).



## System operation

### ● Eaton 5P 850G Tower UPS

Accessory no. PW5P850G

850VA/600W

Input: IEC C14

Output: (6) IEC C13

Dimensions (H x W x D): 9.1-in. x 5.9-in. x 13.6-in.

Weight: 23 lbs

Run Time @ Full Load: 4 min.

Run Time @ Half Load: 14 min.

This product is not OSHPD certified.

Includes two-year limited warranty with depot exchange through Eaton.



### ■ Hand-held control

Factory no. 14409876

### ◆ Hand-held control

Service no. 10594730

Additional hand-held control for the control room for remote control of the system. All table movements, travel and park position of the X-ray system, park position of the scattered radiation grid, zoom levels, collimator setting.

Individually configurable patient transfer and standard working position.

Memory functions for table positions and collimator setting.

Storage of fluoroscopy images, navigation in the patient image and reference folder and image reversal.

Switch between reference/endoscopy and ultrasound modes.

Change of organ program. Automatic fluoroscopy control.

The hand-held control attaches magnetically to the control panel in the control room.



# System operation

---

## ■ Multifunctional footswitch Advanced

Factory no. 14404737

Ergonomic footswitch for controlling table lift, table tilt, table longitudinal and transverse movement, rocker switch for longitudinal movement of the X-ray system, switch between X-ray/endoscopy/ultrasound image, storage of endoscopic image snapshot, last fluoroscopic image (LIH), and rocker switch for fluoroscopy/radiography.



---

## ■ Footswitch for fluoroscopy and X-ray

Factory no. 04459538

Basic footswitch for releasing fluoroscopy and radiography in the examination room.





# Endoscopy accessories

## ■ HD VideoManager

Factory no. 14409832

Display of sources such as endoscopy, ultrasound or image review workstations on the right-hand monitor of the examination room display on the unit. Connection via HD Video Manager; supports HD (high-definition) endoscopy, features connections for 1 x Composite, 2 x S-Video 2(Y / C), 2 x HDMI, 1 x DP 1, 2 x DVI I, 1 x S-Video 1, 2 x SD/HD/3G SDI; offers 150 pre-programmed timings and supports PAL and NTS up to 1080p (4096 x 2160, 50/60 Hz, interlaced/progressive) at input.



## ■ HD VideoManager Urodynamics

Factory no. 14409833

Additional output on the VideoManager with the X-ray live signal in DVI-I format. E.g. for video urodynamics or for connecting an additional external monitor.



## Endoscopy accessories

---

### ■ Endoscopy shelf, left/Endoscopy shelf, right

Factory no. 04459595/04440454

---

Compact storage rack mounted on the unit column for ergonomic positioning of endoscopy modules such as endo light source, endo camera or HF generator, video recorder, video printer.

Max. load capacity 50 kg (110 lbs) with limited mounting height of the modules.

**For left-hand version of the basic unit: Sales no. 04459595**

**For right-hand version of the basic unit: Sales no. 04440454**



---

### ■ Endocable holder

Factory no. 04459561

---

Holder mounted on the tube assembly support arm for easy routing of endoscopy cables during examinations.



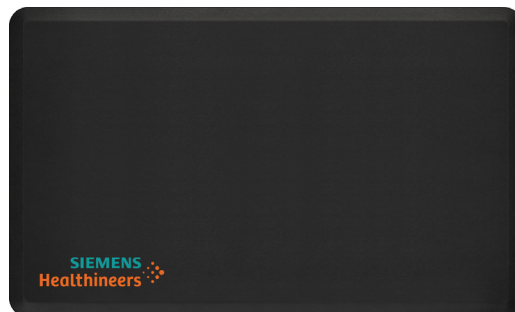
## Miscellaneous

### ● Black anti-fatigue mat 36 x 60

Accessory no. GEL1040136601278

Black NewLife EcoPro anti-fatigue mat (36-in. x 60-in.), 3/4-in. polyurethane foam, fluid and dirt resistant with anti-microbial properties, matte textured surface.

The ultimate employee benefit for workers who stand, this mat is ergonomically designed to provide the perfect balance of premium comfort and optimal support. Proprietary Cellulon® Polyurethane Technology stands up to the tough demands of commercial environments while providing lasting comfort that won't bottom out over time. This eco-friendly line of anti-fatigue mats is certified by the National Floor Safety Institute for its high traction bottom surface.



### ■ Radiation protection, removable

Factory no. 08861028

To protect the upper body against scattered radiation in the operator's environment. The radiation protection shield consists of two elements and can be inserted into the accessory rails of the primary collimator for exposures and fluoroscopy-guided examinations. They are made of two-ply segmented lead-rubber panels (Pb 0.5) and are covered in easy-to-clean plastic.

Can be used within an examination unit tilt range of  $\pm 10^\circ$ .

Weight: 5.0 kg (11 lbs)



### ■ Radiation protection Uro, 46 cm

Factory no. 11155051

Ceiling mounted, fixed X-ray protection.

Usable for a room height 250 cm until 280 cm.

Scope of delivery:

- Column for fix-point installation, length = 46 cm
- Suspension arm with 75 cm long extension arm and 91 cm long, eight adjustable spring arm
- Laterally guided, lead-acrylic X-ray protective shield, 28 x 42 cm (W x H), 0.5 mm lead equivalent
- One box of 50 sterile, disposable covers





## Miscellaneous

### ■ Radiation protection Uro, 85 cm

Factory no. 11155052

Ceiling mounted, fixed X-ray protection.  
Usable for a room height more than 280 cm.

Scope of delivery:

- Column for fix-point installation, length = 85 cm
- Suspension arm with 75 cm long extension arm and 91 cm long, height adjustable spring arm
- Laterally guided, lead-acrylic X-ray protective shield, 28 x 42 cm (W x H), 0.5 mm lead equivalent
- One box of 50 sterile, disposable covers



### ■ Monitor table

Factory no. 04459553

Control room desk (72 cm height, 120 cm width, 80 cm depth) which accommodates up to 2 monitors as well as keyboard, mouse and control panel (pictured with imaging system container).



### ■ Accessories cart

Factory no. 04459520

Mobile accessories cart with holders allowing the space-saving storage of standard accessory components of the UROSKOP Access, UROSKOP Omnia and UROSKOP Omnia Max (e.g. tabletop extensions, Coxafix leg supports, arm rest, footboard, micturition seat, infusion bottle holder, etc.).



## Miscellaneous

### ● AMATECH Patient Restraint Strap with hooks

Accessory no. AMFPRS

The patient security strap attaches to the table rail quickly with stainless steel hooks. It adjusts easily with the use of airplane style buckles. The strap is made of conductive reinforced material for durability and ease of cleaning. Adjusts from 18-in. to 45-in. The mid panel is 5-in. wide. Fits all tables.



### ● Uroskop Table Pad

Accessory no. CF523601

Compression Formed Urology Table pad designed to fit the exact specifications of our Uroskop Table with integral drain flap.

Pad is 2.5 in thick to promote patient comfort.

**Note: Pad thickness does not align with the leg extension from Siemens Healthineers.**



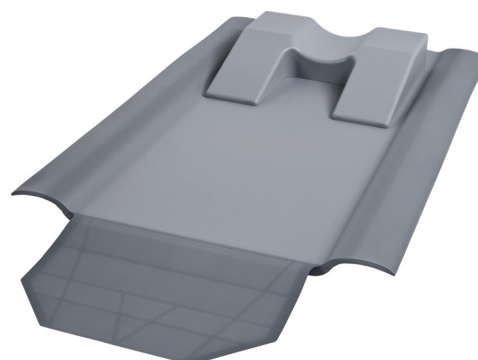
### ◆ Uroskop Omnia Patient Table Pad

Service no. 7453892

### ◆ Uroskop Omnia Leg Extension Pad

Service no. 7730448

Original OEM Uroskop Countour Table Pad from Siemens Healthineers



## Miscellaneous

### ■ Head Wedge – Neck Cushion (all models)

Factory no. 14459889

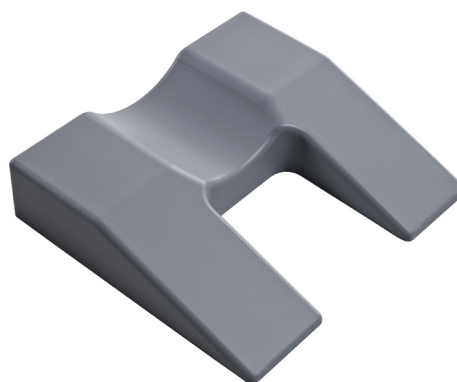
### ◆ Head Wedge – Neck Cushion (all models)

Service no. 01612212

Head wedge for comfortable positioning of the patient.

NOTE: When ordering this part, please be sure to include a reference to **IM05974198**.

Once ordered, this part cannot be cancelled and is non-returnable.



### ◆ Urooskop Arm Shield Replacement

Service no. 08128808

The arm shield attaches anywhere along the accessory rails on the column side. It prevents the patient's arm from potentially sliding off the tabletop.



### ■ Holder for plastic drain bag

Factory no. 04459488

### ◆ Drain Bag Rod Replacement

Service no. 5357298

### ◆ Drain Bag Bracket Replacement

Service no. 7190234

**If your need is urgent, order this as a Service part (black).**

It will arrive in two parts, but you may get it within days.



## How to order

With the Accessory Sales Part Number (●)

### **To re-order Siemens Healthineers Urology Accessories:**

Email your PO to [spasorder.team@siemens-healthineers.com](mailto:spasorder.team@siemens-healthineers.com)

### **To receive an order the next day, Siemens Healthineers must receive a Purchase Order by 12:00 p.m. ET.**

We highly recommend that you order multiple quantities.

- To receive an order the next day of Drain bags or Footswitch covers, Siemens Healthineers must receive a Purchase Order by 12:00 p.m. ET. We highly recommend that you order multiple quantities.
- Next-day delivery cannot be guaranteed for items other than Drain Bag or Footswitch covers.

**To ensure accurate delivery, please list the correct “Ship to” address, department, contact name, and phone number. Also list your FedEx or UPS account number, if applicable.**



## How to order

With the Service Part Number (◆)

**You have three ways to re-order Siemens Healthineers Urology Accessories:**

1. Call us at 1-800-888-7436 – be sure to have your PO Number ready.
  - a. Enter “Option #2” and then “Option#2” a second time
  - b. You will be asked for a Siemens Account Number, or for your Siemens Site ID Number (400-XXXXXX)
2. Email your PO to: [USCCdirectsalesSPorders.team@siemens-healthineers.com](mailto:USCCdirectsalesSPorders.team@siemens-healthineers.com)
3. Fax your PO to 888-851-7343

\*Note: All PO's must have Site ID# 400-XXXXXX



## How to order

With the Factory Part Number (■)

### **To re-order Siemens Healthineers Factory Urology Accessories:**

1. Contact for your local Urology Accessories Contact
2. Email your PO to your local sales agent or regional order entry email box



**Siemens Healthineers** pioneers breakthroughs in healthcare. For everyone. Everywhere. Sustainably. The company is a global provider of healthcare equipment, solutions and services, with activities in more than 180 countries and direct representation in more than 70. The group comprises Siemens Healthineers AG, listed as SHL in Frankfurt, Germany, and its subsidiaries. As a leading medical technology company, Siemens Healthineers is committed to improving access to healthcare for underserved communities worldwide and is striving to overcome the most threatening diseases. The company is principally active in the areas of imaging, diagnostics, cancer care and minimally invasive therapies, augmented by digital technology and artificial intelligence. In fiscal 2024, which ended on September 30, 2024, Siemens Healthineers had approximately 72,000 employees worldwide and generated revenue of around €22.4 billion.

Further information is available at [www.siemens-healthineers.com](http://www.siemens-healthineers.com).

The outcomes and statements provided by customers of Siemens Healthineers are unique to each customer's setting. Since there is no "typical" hospital and many variables exist (e.g., hospital size, case mix, and level of service/technology adoption), there can be no guarantee that others will achieve the same results.

On account of certain regional limitations of sales rights and service availability, we cannot guarantee that all products included in this brochure are available through the Siemens Healthineers sales organization worldwide. Availability and packaging may vary by country and is subject to change without prior notice. Some/All of the features and products described herein may not be available in the United States.

The information in this document contains general technical descriptions of specifications and options as well as standard and optional features, which do not always have to be present in individual cases.

Siemens Healthineers reserves the right to modify the design, packaging, specifications, and options described herein without prior notice. For the most current information, please contact your local sales representative from Siemens Healthineers.

Note: Any technical data contained in this document may vary within defined tolerances. Original images always lose a certain amount of detail when reproduced.

---

#### **Siemens Healthineers Headquarters**

Siemens Healthineers AG  
Siemensstr. 3  
91301 Forchheim, Germany  
[siemens-healthineers.com](http://siemens-healthineers.com)

#### **USA**

Siemens Medical Solutions USA, Inc.  
Healthcare  
40 Liberty Boulevard  
Malvern, PA 19355-9998, USA  
[siemens-healthineers.us](http://siemens-healthineers.us)