



## Study Protocol

# **syngo Dyna3D DSA imaging of right hip after surgery**

Interventional Radiology

*A syngo DualVolume visualization was used to show vessels in relation to the anatomical structures to find the bleeding.*

---

### Courtesy of

A.D. Montauban van  
Swijndregt, MD, OLVG,  
Amsterdam, Netherlands

### Supported by

syngo Dyna3D

### System & Software

Artis Q ceiling VD10  
syngo X Workplace VC10

---

## Case Description

### Patient history

Arterial bleeding after Gamma nail insertion in right hip.

### Diagnosis

Immediately after surgery there was swelling of the upper leg. Deep femoral artery bleeding was suspected. CT angio showed a blush in muscle and the patient was transferred to the angio suite for exact localization of the bleeding and further treatment.

A syngo Dyna3D DSA run was performed and after fully automated reconstruction of all volumes, visualized in syngo DualVolume mode to show vessels in relation to the anatomical structures to find the bleeding.

### Treatment

The bleeding had stopped in the meantime, so treatment was not necessary.

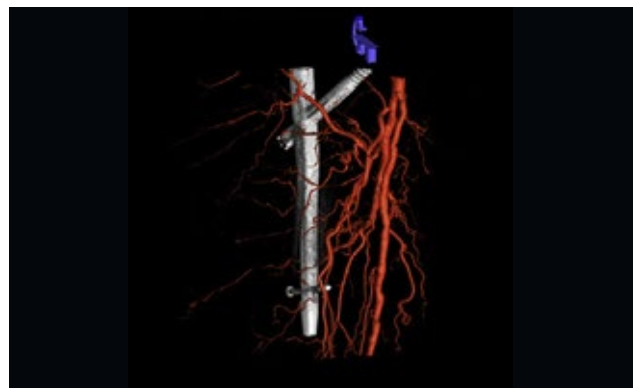
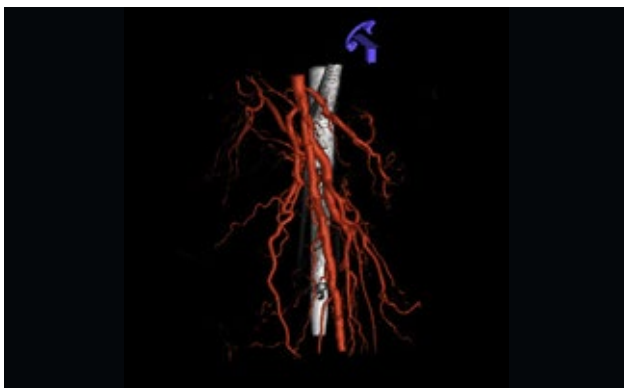
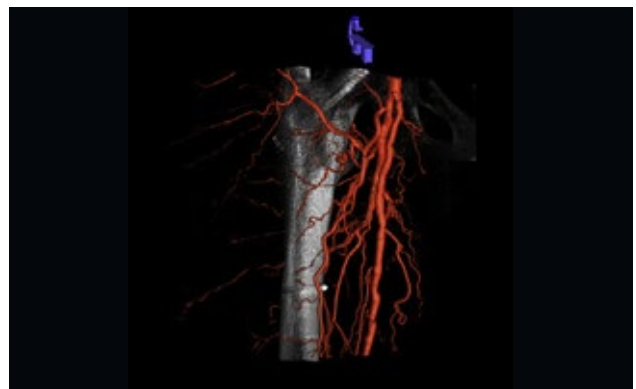
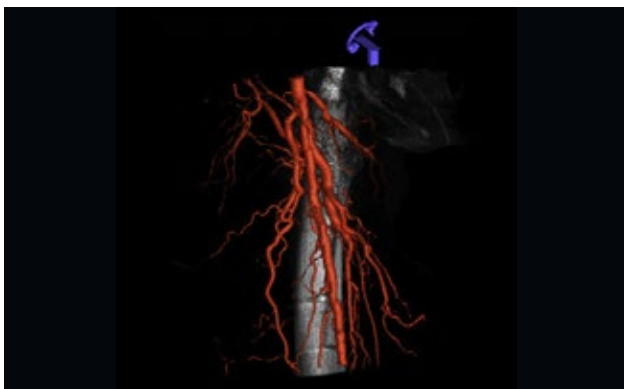
### General comments

Due to the metal artifacts of the Gamma nail we decided for a highcontrast Dyna3D DSA run, rather than using a soft-tissue syngo DynaCT run.

This turned out to be a nice 3D volume, and even nice MPR views of the bony tissue.

# Transarterial chemoembolization of HCC

Acquisition protocol	5sDSA Body
<b>Injection protocol</b>	
Catheter position	Selective in arteria iliaca communis
Contrast medium (CM)	270 mg iodine/mL
Dilution	No
Injection volume	24 mL
Injection rate	4 mL/s
Duration of injection	6 s
X-ray delay	1 s
Power injector used	Yes
<b>Reconstructions</b>	
	<b>Primary</b>
Name	Dyna3D DSA Dual Body
VOI size	Full
Slice matrix	512 × 512
Kernel type	EE for sub volume/HU for mask volume
Image characteristics	Auto
Reconstruction mode	Dual
Viewing preset	DualVolume



syngo DualVolume combines the reconstruction of mask run with the subtracted reconstruction to show vessels in relation to bones in any angulation

*The statements by Siemens' customers presented here are based on results that were achieved in the customer's unique setting. Since there is no "typical" hospital and many variables exist (e.g., hospital size, case mix, level of IT adoption), there can be no guarantee that other customers will achieve the same results.*

*On account of certain regional limitations of sales rights and service availability, we cannot guarantee that all products included in this case are available throughout the Siemens sales organization worldwide.*

*All rights reserved.*

---

**Siemens Healthineers Headquarters**

Siemens Healthcare GmbH

Henkestr. 127

91052 Erlangen, Germany

Phone: +49 9131 84-0

siemens-healthineers.com