

DICOM Conformance Statement

myCoro Scout FFR VA1

Product Name

myCoro Scout FFR



DICOM Conformance Statement Overview

myCoro Scout FFR VA1 is an angio-based FFR Application (for hemodynamic assessment for a vessel branch). It supports Storage of XA images and Transfer of enhanced Structured Reports utilizing the DICOM “Storage Service Class” and the display of data. myCoro Scout FFR is available with the new ARTIS Portfolio (ARTIS genio /ARTIS icono.explore /ARTIS icono.vision /ARTIS pheno.vision) with VE50 onwards.and will not to be used autonomously. Following only the term ARTIS will be used.

myCoro Scout FFR VA1 conforms to the DICOM Standard and supports the network Services as described in Table 1: Network Services

Table 1: Network Services

SOP Classes	SOP Class UID	User of Service (SCU)	Provider of Service (SCP)	
		Send	Store	Display
SOP Classes created by myCoro Scout FFR VA1				
Enhanced SR Storage	1.2.840.10008.5.1.4.1.1.88.22	Yes	No	No
SOP Classes managed by myCoro Scout FFR VA1				
X-Ray Angiographic Image Storage	1.2.840.10008.5.1.4.1.1.12.1	No	Yes	Yes

Table 2: Implementation Identifying Information

Name	Value
Application Context Name	1.2.840.10008.3.1.1.1
Implementation Class UID	1.3.12.2.1107.5.12.202
Implementation Version Name	“fo-dicom 5.2.5”

3	INTRODUCTION	5
3.1	Revision History	5
3.2	Audience	5
3.3	Remarks	5
3.4	Definitions, Terms and Abbreviations	6
3.5	References	6
4	NETWORKING	7
4.1	Implementation Model	7
4.1.1	Application Data Flow	7
4.1.2	Functional Definitions of Application Entities	8
4.1.3	Sequencing of Activities	9
4.2	AE Specifications	9
4.2.1	Storage AE Specification	9
4.3	Network Interfaces	13
4.3.1	Physical Network Interface	13
4.3.2	Additional Protocols	13
4.3.3	IPv4 and IPv6 Support	13
4.4	Configuration	13
4.4.1	AE Title/Presentation Address Mapping	13
4.4.2	Parameters	14
5	SUPPORT OF EXTENDED CHARACTER SETS	15
6	ATTRIBUTE CONFIDENTIALITY PROFILES	16
6.1	Data Minimization	16
6.2	Security Profiles	16
6.2.1	Time Synchronization Profiles	16
6.2.2	BCP 195 RFC 8996, 9325 TLS Secure Transport Connection Profile	16
6.3	Association-Level Security	16
6.4	Application-Level Security	16
7	ANNEXES	17
7.1	IOD Contents	17
7.1.1	Created SOP Instances	17
7.1.2	Image Type Values	23
7.1.3	Usage of Attributes from received IODs	23
7.1.4	Attribute mapping	23
7.1.5	Coerced / Modified fields	23

7.2	Data Dictionary of Private Attributes	23
7.3	Coded Terminology and Templates	24
7.3.1	Context Groups	24
7.3.2	Template Specifications	24
7.3.3	Private Code definitions	25
7.4	Grayscale Image Consistency	26
7.5	Standard Extended / Specialized / Private SOP Classes	26
7.6	Private Transfer Syntaxes	26
7.7	Sorting Information in Images	26
ANNEX A:	INDEX OF TABLES	27
ANNEX B:	TABLE OF FIGURES	27

3 Introduction

3.1 Revision History

Document Version	Date	Product	Product Version	Change
11108440-ESK-300-00	04/2026	myCoro Scout FFR	VA1	Initial Version

3.2 Audience

This document is intended for hospital staff, health system integrators, software designers or implementers. It is assumed that the reader has a working understanding of DICOM.

3.3 Remarks

The scope of this DICOM Conformance Statement is to facilitate integration between this product and other DICOM products. The Conformance Statement should be read and understood in conjunction with the DICOM Standard [1]. DICOM by itself does not guarantee interoperability.

The Conformance Statement does, however, facilitate a first-level comparison for interoperability between different applications supporting compatible DICOM functionality.

This Conformance Statement is not supposed to replace validation with other DICOM equipment to ensure proper exchange of intended information. In fact, the user should be aware of the following important issues:

- The comparison of conformance statements is the first step towards assessing interconnectivity and interoperability between myCoro Scout FFR VA1 and other DICOM conformant equipment.
- Test procedures should be defined and executed to validate the required level of interoperability with specific compatible DICOM equipment, as established by the healthcare facility.

Siemens Healthineers reserves the right to modify the design and specifications contained herein without prior notice. Please contact your local Siemens representative for the most recent product information.

3.4 Definitions, Terms and Abbreviations

Definitions, terms, and abbreviations used in this document are defined within the different parts of the DICOM standard. Additional Abbreviations and terms are as follows:

AE	DICOM Application Entity
AET	Application Entity Title
ASCII	American Standard Code for Information Interchange
DICOM	Digital Imaging and Communications in Medicine
FSC	File Set Creator
FSR	File Set Reader
FSU	File Set Updater
GSDP	Grayscale Standard Display Function
IOD	DICOM Information Object Definition
ISO	International Standard Organization
HIS	Hospital Information System
n. a.	not applicable
NEMA	National Electrical Manufacturers Association
O	Optional Key Attribute
PDU	DICOM Protocol Data Unit
R	Required Key Attribute
RIS	Radiology Information System
SCU	DICOM Service Class User (DICOM client)
SCP	DICOM Service Class Provider (DICOM Server)
SOP	DICOM Service-Object Pair
SR	Structured Report
TFT	Thin Film Transistor (Display)
TID	Template ID
U	Unique Key Attribute
UID	Unique Identifier
UTF-8	Unicode Transformation Format-8
VR	Value Representation

3.5 References

- [1] NEMA PS3 / ISO 12052, Digital Imaging and Communications in Medicine (DICOM) Standard, National Electrical Manufacturers Association, Rosslyn, VA, USA (available free at <https://www.dicomstandard.org/>)
- [2] Integrating the Healthcare Enterprise – IHE Radiology Technical Framework – <http://www.ihe.net>

4 Networking

4.1 Implementation Model

myCoro Scout FFR VA1 supports receiving DICOM images and storing DICOM enhanced Structured Reports to remote nodes.

4.1.1 Application Data Flow

The following figures provide a functional overview of the myCoro Scout FFR VA1 Application Entities (AE). Please do note that it is based on the default configuration and may differ depending on configuration at the customer site.

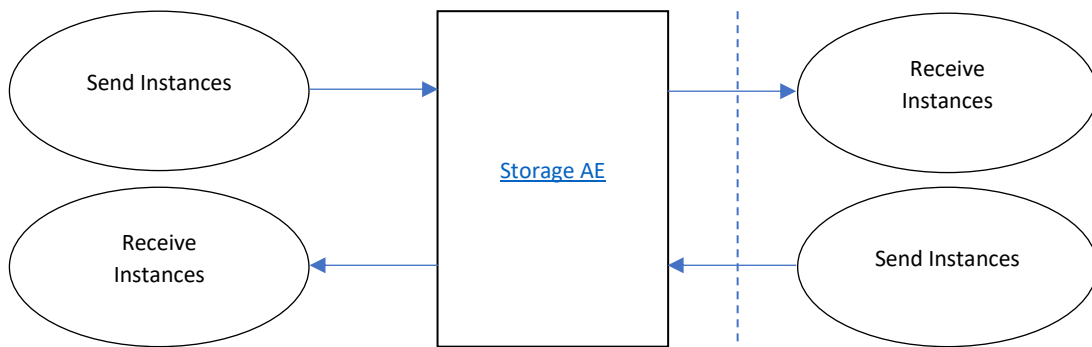


Figure 1: myCoro Scout FFR VA1 DICOM Data Flow diagram

4.1.2 Functional Definitions of Application Entities

The SCP components of the Application Entities of the myCoro Scout FFR VA1 operate as background server processes. They exist as soon as the system is powered up and wait for association requests. Upon accepting an association with a negotiated Presentation Context, they start to receive and process the requests described in the following sections.

The SCU components of the Application Entity are invoked upon requests from the user interface.

4.1.2.1 Functional Definition of Storage AE

The myCoro Scout FFR VA1 Storage SCU is invoked directly by the user. The job consists of data describing the composite objects selected for Storage and the destination Application Entity Title. An association is negotiated with the destination Application Entity, and the data is transferred using the C-STORE-RQ. The transfer status is reported to the user.

The Storage SCP component of the myCoro Scout FFR VA1 starts to receive the Composite Objects and store them into file system after accepting an association with a negotiated Presentation Context. The system responds to the Storage Request immediately after reception of the Data.

4.1.3 Sequencing of Activities

This section describes the sequencing of the DICOM Communication activities performed by the myCoro Scout FFR VA1 Entities using a UML sequence diagram. The Entities are depicted as vertical bars. The arrows show the messages exchanged.

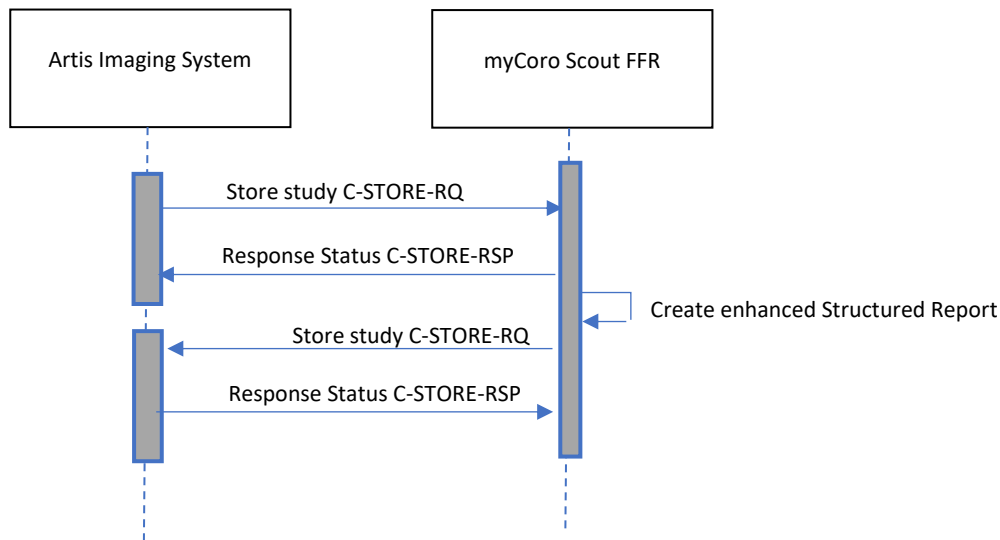


Figure 2: Sequence Diagram - Acquisition workflow

4.2 AE Specifications

This section outlines the specifications for each of the Application Entities that are part of the myCoro Scout FFR VA1.

4.2.1 Storage AE Specification

4.2.1.1 SOP Classes

The Storage AE provides Standard Conformance to the SOP Classes listed in “Table 1: Network Services” section “SOP Classes Created by the myCoro Scout FFR VA1” and “SOP Classes Managed by the myCoro Scout FFR VA1” in the [“Conformance Statement Overview”](#).

4.2.1.2 Association Policy

Table 3: Association Policies

Application Context Name	1.2.840.10008.3.1.1.1
PDU size	256 kB ¹

¹ The value is not configurable

Maximum number of simultaneous associations as an association acceptor	unlimited
Maximum number of simultaneous associations as an association initiator	1 (sequential)

The myCoro Scout FFR VA1 set the PDU size of 256 kB and it is not configurable.

The maximum number of simultaneous receiving associations (SCP) is unlimited.

There is no inherent limit to the number of outgoing associations (SCU), other than limits imposed by the computer operating system.

4.2.1.2.1 Asynchronous Nature

myCoro Scout FFR VA1 does not negotiate asynchronous operations. All DICOM operations use a synchronous operations window of 1.

4.2.1.2.2 Implementation Identifying Information

For Implementation Identifying Information please refer to “Table 2: Implementation Identifying Information” in the [“Conformance Statement Overview”](#).

4.2.1.3 Association Initiation Policy

4.2.1.3.1 Activity “Send Instances”

The myCoro Scout FFR VA1 serves as an SCU of the Storage Service Class. The Storage SCU is triggered by the user when a structured report is generated following analysis completion. For each report, a new association is opened to the configured ARTIS DICOM node. A single C-STORE request is sent per association; the association is released after the transfer completes.

4.2.1.3.2 Proposed Presentation Contexts

The Storage SCU proposes Enhanced SR Storage (1.2.840.10008.5.1.4.1.1.88.22) with the fo-dicom default transfer syntaxes: Explicit VR Little Endian and Implicit VR Little Endian.

4.2.1.3.3 SOP Specific Conformance for SOP Classes

n.a.

4.2.1.4 Association Acceptance Policy

4.2.1.4.1 Activity “Receive Instances”

The myCoro Scout FFR VA1 serves as an SCP of the Storage Service Class. The Storage SCP accepts incoming C-Store-RQ only from the configured ARTIS, receives supported objects transmitted on that association and stores them in the file system.

4.2.1.4.2 Other SOP specific behavior

If an image is received that is already stored in the file system – identified by the SOP Instance UID – the new image will be ignored. The existing instance is not superseded.

A received XA image will be discarded if one of the following conditions is not met:

The following header attributes must be available and filled:

- (0028,0010) Rows
- (0028,0011) Columns
- (0020,000D) Study Instance UID and
- (0008,0018) SOP Instance UID.

The following header attributes must be within following boundaries:

- (0018,1164) Imager Pixel Spacing: ≥ 0
- (0018,1510) Positioner Primary Angle: -180 to 180
- (0018,1511) Positioner Secondary Angle: -90 to 90
- (0018,1702) Collimator Left Vertical Edge: 0 to Columns
- (0018,1704) Collimator Right Vertical Edge: 0 to Columns + 1
- (0018,1706) Collimator Upper Horizontal Edge: 0 to Rows
- (0018,1708) Collimator Lower Horizontal Edge: 0 to Rows + 1
- (0018,1602) Shutter Left Vertical Edge: 0 to Columns
- (0018,1604) Shutter Right Vertical Edge: 0 to Columns + 1
- (0018,1606) Shutter Upper Horizontal Edge: 0 to Rows
- (0018,1608) Shutter Lower Horizontal Edge: 0 to Rows + 1

A received XA image will be discarded if one of the following conditions are detected:

- Patient info mismatch:
the patient fields in the DICOM (name, date of birth, sex, patient ID) differ from those already on record for the same (0020,000D) Study Instance UID
- Wrong modality:
(0008,0060) Modality is not XA
- Unsupported image type:
(0008,0008) Image Type is not one of the supported ORIGINAL PRIMARY variants for SINGLE PLANE A/B or BIPLANE A/B
- Non-positive pixel spacing:
(0018,1164) Imager Pixel Spacing ≤ 0
- Frame rate too low:
(0018,0040) Cine Rate < 7 fps
- Too few frames:
(0028,0008) Number Of Frames < 5
- Inconsistent frame time:
(0028,0009) Frame Increment Pointer, (0018,1063) Frame Time or (0018,1065) Frame Time Vector absent or inconsistent
- Image too small:
(0028,0010) Rows or (0028,0011) Columns < 256
- Incomplete collimator data:
some but not all of the four collimator edge tags (0018,1702) – (0018,1708) are present, or the shape is not RECTANGULAR, or edges are in an invalid order/out of bounds
- Missing magnification factor:
(0018,1114) Estimated Radiographic Magnification Factor absent and neither (0018,1110) Distance Source To Detector nor (0018,1111) Distance Source To Patient present as fallback
- Missing positioner angles:
(0018,1510) Positioner Primary Angle or (0018,1511) Positioner Secondary Angle absent
- Missing series number:
(0020,0011) Series Number absent
- Missing pixel descriptor tags:
(0028,0100) Bits Allocated, (0028,0101) Bits Stored, or (0028,0103) Pixel Representation absent
- Missing representative frame:
(0028,6010) Representative Frame Number absent
- Missing pixel data:
(7FE0,0010) Pixel Data absent

4.3 Network Interfaces

4.3.1 Physical Network Interface

The myCoro Scout FFR VA1 provides DICOM 3.0 TCP/IP network communication support as defined in Part 8 of the DICOM Standard. Network communication is independent from the physical medium over which TCP/IP executes.

4.3.2 Additional Protocols

None

4.3.3 IPv4 and IPv6 Support

Only IPv4 is supported.

4.4 Configuration

4.4.1 AE Title/Presentation Address Mapping

AE Titles must be unique within the hospital. A common way to achieve that is to use the hostname as part of the AE Titles. The string can be up to 16 characters and must not contain any extended characters. Only 7-bit ASCII characters (excluding Control Characters) are allowed according to the DICOM Standard.

4.4.1.1 Local AE Titles

While the myCoro Scout FFR VA1 application allows to freely configure its AE Title and Ports, this configurability is only available to the teamplay DevOps engineers. In case of multiple installations in the same hospital, teamplay DevOps must be involved to change these values.

The default values in case of no customization via teamplay are:

Table 4: AE Titles

Parameter	Configurable	Default Value
Default AE title	(Yes)	MYCOROSCOUFFFFR
Default Basic Port	(Yes)	8085
Default Secure Port	(Yes)	8056

4.4.1.2 Remote AE Title/Presentation Address Mapping

4.4.1.2.1 Remote Association Initiators

myCoro Scout FFR **VA1** accepts DICOM associations only from configured ARTIS system.

4.4.1.2.2 Remote Association Acceptors

myCoro Scout FFR **VA1** setup association only to the DICOM provided by the configured ARTIS system with the following information:

- Application Entity Title
- Host Name / IP address
- Port number

4.4.1.3 Secure DICOM Communication

The system supports configuring DICOM communication to use secure channel (TLS) between myCoro Scout FFR VA1 and configured ARTIS system. When Secure DICOM is enabled, mutual TLS authentication is enforced: both myCoro Scout FFR VA1 and the remote ARTIS system must present valid certificates during the TLS handshake.

Certificate trust is established by configuring the Root CA certificate that issued the remote peer's certificate. myCoro Scout FFR VA1 validates the remote certificate chain against this configured Root CA. If the peer certificate was issued by a different CA than the server certificate, a separate Peer CA certificate can be configured.

When Secure DICOM is active, the default DICOM listening port changes from 8085 to 8086. Plain DICOM and Secure DICOM are mutually exclusive — only one mode is active per installation.

The configuration of Secure DICOM certificates can only be applied by a teamplay DevOps engineer for myCoro Scout FFR VA1.

4.4.2 Parameters

N/A

5 Support of Extended Character Sets

myCoro Scout FFR VA1 does not declare any specific input character sets; *fo-dicom* processes the SpecificCharacterSet (0008,0005) automatically.

6 Attribute confidentiality profiles

6.1 Data Minimization

The myCoro Scout FFR **VA1** application supports no Data Minimization nor De-Identification. This application does not comply with any DICOM de-identification profile; no attribute cleaning implemented.

6.2 Security Profiles

6.2.1 Time Synchronization Profiles

myCoro Scout FFR VA1 does not implement its own time synchronization mechanism. The application relies on the system clock of the underlying host platform (teamply EdgeV2). Time accuracy depends on the host's NTP configuration, which is outside the scope of this application.

6.2.2 BCP 195 RFC 8996, 9325 TLS Secure Transport Connection Profile

myCoro Scout FFR VA1 supports TLS 1.2 and TLS 1.3 protocols for Secure DICOM communication. Cipher suite selection is governed by the container's OpenSSL configuration (Alpine Linux).

Table 5: Secure Transport Connection Profiles

Supported TLS Feature	Mechanism
Key Exchange Algorithm	ECDHE, DHE, RSA
Signature Algorithm	ECDSA, RSA, RSA-PSS
Hash Algorithm / Data Integrity	SHA-256, SHA-384, SHA-512
Cipher suites (TLS 1.2)	DHE-RSA-AES256-GCM-SHA384, ECDSA+SHA512, RSA-PSS+SHA512, RSA+SHA512, ECDSA+SHA384, RSA-PSS+SHA384, RSA+SHA384, ECDSA+SHA256, RSA-PSS+SHA256, RSA+SHA256
Cipher suites (TLS 1.3)	Per OpenSSL defaults (TLS_AES_256_GCM_SHA384, TLS_AES_128_GCM_SHA256, TLS_CHACHA20_POLY1305_SHA256)

The default Secure DICOM port is 2762 (internally) / 8086 (externally). Both ports are configurable.

The cipher suite selection is determined by the OpenSSL library configuration shipped with the container image. It is not dependent on end-user OS settings.

6.3 Association-Level Security

myCoro Scout FFR VA1 restricts inbound DICOM associations to the configured known AE Title of the ARTIS system. Outbound DICOM associations (SR send-back) are restricted to the known ARTIS system by default in both plain and Secure DICOM modes.

6.4 Application-Level Security

Configuration of myCoro Scout FFR VA1 (including Secure DICOM certificates, AE Titles, and port assignments) is performed exclusively by teamply DevOps engineers via Kubernetes configuration resources on the EdgeV2 platform.

No local administrative login to the application is available; access to the deployment infrastructure is governed by teamply platform credentials.

7 Annexes

7.1 IOD Contents

7.1.1 Created SOP Instances

The following tables use a number of abbreviations. The abbreviations used in the “Presence” column are

- VNAP: Value is Not Always Present. Attribute is sent zero length if no value is present.
- ANAP: Attribute Not Always Present.
- ALWAYS: Attribute and Value are always present.
- EMPTY: Attribute is sent zero length.

The abbreviations used in the “Source” Column are

- MWL: The attribute value is copied from Modality Worklist.
- USER: The attribute value is entered by the user.
- AUTO: The attribute value is generated by the system.
- CONFIG: The attribute value is obtained by configuration
- ORIG: The attribute value is copied from originating image object

7.1.1.1 Enhanced SR IOD

The myCoro Scout FFR VA1 system creates an Enhanced SR.

Table 6: IOD of Enhanced SR SOP Instances

IE	Module	Reference	Presence of Module
Patient	Patient Module	Table 7	ALWAYS
Study	General Study Module	Table 8	ALWAYS
Series	SR Document Series	Table 11	ALWAYS
Equipment	General Equipment	Table 9	ALWAYS
Document	SR Document General	Table 12	ALWAYS
	SR Document Content	Table 13	ALWAYS
	SOP Common	Table 10	ALWAYS

7.1.1.2 Common Modules

Table 7: Patient Module

Attribute	Tag	Source	Value	Presence	Comments
Patient's Name	(0010,0010)	ORIG	From originating XA object	VNAP	Empty if not present in originating object
Patient ID	(0010,0020)	ORIG	From originating XA object	VNAP	Empty if not present in originating object
Patient's Birth Date	(0010,0030)	ORIG	From originating XA object	VNAP	Empty if not present in originating object
Patient's Sex	(0010,0040)	ORIG	From originating XA object	VNAP	Empty if not present in originating object

Table 8: General Study Module

Attribute	Tag	Source	Value	Presence	Comments
Study Date	(0008,0020)	ORIG	From originating XA object	VNAP	Empty if not present in originating object
Study Time	(0008,0030)	ORIG	From originating XA object	VNAP	Empty if not present in originating object
Accession Number	(0008,0050)	AUTO	-	EMPTY	Not captured from originating object; always empty
Referring Physician's Name	(0008,0090)	AUTO	-	EMPTY	Not captured from originating object; always empty
Study Instance UID	(0020,000D)	ORIG	From originating XA object	ALWAYS	Auto-generated if originating value is missing or invalid
Study ID	(0020,0010)	ORIG	From originating XA object	VNAP	Empty string if not present in

Attribute	Tag	Source	Value	Presence	Comments
					originating object

Table 9: General Equipment Module

Attribute	Tag	Source	Value	Presence	Comments
Manufacturer	(0008,0070)	AUTO	"Siemens Healthineers"	ALWAYS	

Table 10: SOP Common Module

Attribute	Tag	Source	Value	Presence	Comments
SOP Class UID	(0008,0016)	AUTO	"1.2.840.10008.5.1.4.1.1.88.22"	ALWAYS	
SOP Instance UID	(0008,0018)	AUTO	Generated	ALWAYS	
Coding Scheme Identification Sequence	(0008,0110)	AUTO		ALWAYS	
>Coding Scheme Designator	(0008,0102)	AUTO	"99myCoroScoutFFR"	ALWAYS	
>Coding Scheme UID	(0008,010c)	AUTO	1.3.12.2.1107.5.21.0.0.8.268.7	ALWAYS	
>Coding Scheme Name	(0008,0115)	AUTO	"Siemens Healthineers myCoro Scout FFR private codes"	ALWAYS	
Timezone Offset From UTC	(0008,0201)	AUTO		ALWAYS	

7.1.1.3 X-Ray Radiation Dose SR Modules

Table 11: SR Document Series Module

Attribute	Tag	Source	Value	Presence	Comments
Modality	(0008,0060)	AUTO	"SR"	ALWAYS	
Series Instance UID	(0020,000E)	AUTO	Generated	ALWAYS	
Series Number	(0020,0011)	AUTO	"1"	ALWAYS	
Referenced Performed Procedure Step Sequence	(0008,1111)	AUTO	-	EMPTY	
>Referenced Series Sequence	(0008,1115)	AUTO		ALWAYS	

Attribute	Tag	Source	Value	Presence	Comments
>>Referenced SOP Sequence	(0008,1199)	AUTO		ALWAYS	
>>>Referenced SOP Class UID	(0008,1150)	ORIG		ALWAYS	
>>>Referenced SOP Instance UID	(0008,1155)	ORIG		ALWAYS	
>>Series Instance UID	(0020,000e)	ORIG		ALWAYS	
>Study Instance UID	(0020,000d)	ORIG		ALWAYS	

Table 12: SR Document General Module

Attribute	Tag	Source	Value	Presence	Comments
Instance Number	(0020,0013)	AUTO	"1"	ALWAYS	
Completion Flag	(0040,A491)	AUTO	"COMPLETE"	ALWAYS	
Verification Flag	(0040,A493)	AUTO	"UNVERIFIED"	ALWAYS	
Content Date	(0008,0023)	AUTO	SR creation date	ALWAYS	
Content Time	(0008,0033)	AUTO	SR creation time	ALWAYS	
Performed Procedure Code Sequence	(0040,A372)	AUTO	-	EMPTY	
Current Requested Procedure Evidence Sequence	(0040,A375)				

Table 13: SR Document Content Module

Attribute	Tag	Source	Value	Presence	Comments
Value Type	(0040,A040)	AUTO	"CONTAINER"	ALWAYS	
Concept Name Code Sequence	(0040,A043)	AUTO		ALWAYS	
>Code Value	(0008,0100)	AUTO	"126000"	ALWAYS	
>Coding Scheme Designator	(0008,0102)	AUTO	"DCM"	ALWAYS	
>Code Meaning	(0008,0104)	AUTO	"Imaging Measurement Report"	ALWAYS	
Continuity of Content	(0040,A050)	AUTO	"SEPARATE"	ALWAYS	

Attribute	Tag	Source	Value	Presence	Comments
Content Template Sequence	(0040,A504)	AUTO		ALWAYS	
> Mapping Resource	(0008,0105)	AUTO	"DCMR"	ALWAYS	
>Template Identifier	(0040,DB00)	AUTO	"1500"	ALWAYS	
Content Sequence	(0040,A730)	AUTO		ALWAYS	
>Relationship Type	(0040,A010)	AUTO	CONTAINS	ALWAYS	
>Value Type	(0040,A040)	AUTO	CONTAINER	ALWAYS	
>Include content data according to TID 1500		AUTO		ALWAYS	

7.1.1.4 Private Modules

N/A

7.1.2 Image Type Values

N/A

7.1.3 Usage of Attributes from received IODs

N/A

7.1.4 Attribute mapping

For details regarding the mapping between the XA image object and the created object, refer to Section 7.1.1 Created SOP Instances

7.1.5 Coerced / Modified fields

N/A

7.2 Data Dictionary of Private Attributes

N/A

7.3 Coded Terminology and Templates

7.3.1 Context Groups

N/A

7.3.2 Template Specifications

The myCoro Scout FFR VA1 system creates and stores an Enhanced SR object. The Enhanced SR uses template TID 1500.

7.3.2.1 Enhanced SR

Table 14: Enhanced SR (TID 1500)

NL	Rel with Parent	VT	Concept Name	VM	Presence	Value
		CONTAINER	(126010, DCM, "Imaging Measurements ")	1	ALWAYS	
>	CONTAINS	CONTAINER	(125007, DCM, "Measurement Group")	n	ALWAYS	
>>	HAS OBS CONTEXT	TEXT	(112039, DCM, "Tracking Identifier")	1	ALWAYS	
>>	CONTAINS	CODE	(121071, DCM, "Finding")	1	ALWAYS	FINDING, 99 myCoroScoutFFR, "myCoro Scout FFR CorFFR"
>>	HAS CONCEPT MOD	CODE	(363698007, SCT, Finding site)	1	ALWAYS	
>>	CONTAINS	NUM	(VALUE,99myCoroScoutFFR,"myCoro Scout FFR CorFFR")	1	ALWAYS	
>>	HAS OBS CONTEXT	TEXT	(C2348792,UMLS,"Time Point")	1	ALWAYS	
>>	CONTAINS	CONTAINER	(Input,99myCoroScoutFFR,"Measurement Input")	n	ALWAYS	
>>>	HAS OBS CONTEXT	TEXT	(112039, DCM, "Tracking Identifier")	1	ALWAYS	
>>>	HAS ACQ CONTEXT	TEXT	(130781, DCM, "Image frame")	1	ALWAYS	
>>>	CONTAINS	CODE	(LumenEditStatus,99myCoroScoutFFR,"Lumen Edit Status")	1	ALWAYS	
>>>	CONTAINS	SCoord	(ClickPoint,99myCoroScoutFFR,"Click Point")	1	ALWAYS	
>>>>	SELECTED FROM	IMAGE	(260753009,SCT,"Source")	1	ALWAYS	„XA Image“
>>>	CONTAINS	SCoord	(MLocation,99myCoroScoutFFR,"Measurement Location")	0-1	CONDITIONAL	Either SCoord or TEXT with value "NONE" is used
>>>	CONTAINS	TEXT	(MLocation,99myCoroScoutFFR,"Measurement Location")	0-1	CONDITIONAL	Either SCoord or TEXT with value "NONE" is used

NL	Rel with Parent	VT	Concept Name	VM	Presence	Value
>>>>	SELECTED FROM	IMAGE	(260753009,SCT,"Source")	0-1	CONDITIONAL	Only if SCOORD MLocation,99myCoroScoutFFR,"Measurement Location") is available. "XA Image"

7.3.3 Private Code definitions

The myCoro Scout FFR application uses a private coding scheme "99myCoroScoutFFR" to encode application-specific findings, workflow states, and spatial interaction points that are not covered by standard DICOM or SNOMED CT codes. All private codes are fully described in the following table.

Table 15: Private Codes

Code Value	Coding Scheme Designator	Code Meaning	Description
MLocation	99myCoroScoutFFR	"Measurement Location"	Spatial location on the source image corresponding to the anatomical position where the FFR value is evaluated. May be represented as a 2D SCOORD point or as TEXT with value "NONE" if not available.
ClickPoint	99myCoroScoutFFR	"Click Point"	User-selected interaction points on the referenced XA image. The SCOORD value represents a 2D point in image coordinates used as input for the FFR measurement.
LumenEditStatus	99myCoroScoutFFR	"Lumen Edit Status"	Indicates whether the vessel lumen used for the FFR computation was manually edited by the user or not. Possible values are: <ul style="list-style-type: none"> LumenNotEdited,99myCoroScoutFFR,"Not edited" LumenEdited,99myCoroScoutFFR,"Edited"
LumenEdited	99myCoroScoutFFR	"Edited"	The vessel lumen contour was manually edited by the user before FFR calculation.
LumenNotEdited	99myCoroScoutFFR	"Not edited"	The vessel lumen contour was not manually edited and used as automatically generated.
Input	99myCoroScoutFFR	"Measurement Input"	Container for a single measurement input point
VALUE	99myCoroScoutFFR	"myCoro Scout FFR CorFFR"	The numeric value represents a dimensionless FFR result (UCUM: no units) associated with a specific coronary artery segment.
FINDING	99myCoroScoutFFR	"myCoro Scout FFR CorFFR"	Fractional Flow Reserve (FFR) measurement result calculated by the myCoro Scout FFR application. Identifies the measurement as a CorFFR result

7.4 Grayscale Image Consistency

N/A

7.5 Standard Extended / Specialized / Private SOP Classes

N/A

7.6 Private Transfer Syntaxes

No private Transfer Syntaxes are defined for or requested by myCoro Scout FFR VA1 DICOM application.

7.7 Sorting Information in Images

N/A

Annex A: Index of Tables

Table 1: Network Services.....	2
Table 2: Implementation Identifying Information	2
Table 3: Association Policies.....	9
Table 4: AE Titles	13
Table 5: Secure Transport Connection Profiles	16
Table 6: IOD of Enhanced SR SOP Instances.....	18
Table 7: Patient Module.....	19
Table 8: General Study Module.....	19
Table 9: General Equipment Module.....	20
Table 10: SOP Common Module.....	20
Table 11: SR Document Series Module	20
Table 12: SR Document General Module	21
Table 13: SR Document Content Module.....	21
Table 14: Enhanced SR (TID 1500).....	24
Table 15: Private Codes	25

Annex B: Table of Figures

Figure 1: myCoro Scout FFR VA1 DICOM Data Flow diagram	7
Figure 2: Sequence Diagram - Acquisition workflow.....	9

On account of certain regional limitations of sales rights and service availability, we cannot guarantee that all products included in this brochure are available through the Siemens Healthineers sales organization worldwide. Availability and packaging may vary by country and are subject to change without prior notice.

Some / All of the features and products described herein may not be available in the United States or other countries.

The information in this document contains general technical descriptions of specifications and options as well as standard and optional features that do not always have to be present in individual cases.

Siemens Healthineers reserves the right to modify the design, packaging, specifications and options described herein without prior notice. Please contact your local Siemens Healthineers sales representative for the most current information.

In the interest of complying with legal requirements concerning the environmental compatibility of our products (protection of natural resources and waste conservation), we recycle certain components. Using the same extensive quality assurance measures as for factory-new components, we guarantee the quality of these recycled components.

Siemens Healthineers Headquarters

Siemens Healthineers AG
Siemensstr. 3
91301 Forchheim, Germany
Phone: +49 9191 18-0
siemens-healthineers.com

Manufacturer

Siemens Healthineers AG
Siemensstr. 3
91301 Forchheim, Germany
Phone: +49 9191 18-0
siemens-healthineers.com
