

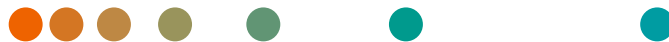
ACUSON Origin ultrasound system

Revolutionizing structural heart procedures

Expand your imaging boundaries
in structural heart imaging

Smart | Clear | Easy

[siemens-healthineers.com/ultrasound](https://www.siemens-healthineers.com/ultrasound)





Smart Features with one click

The ACUSON Origin ultrasound system's AI integration delivers advancements in quantitative capabilities for consistent and reproducible measurements. ACUSON Origin is equipped with state-of-the-art imaging technology designed to meet the demands of challenging interventions and patient populations.

4D Heart^{AI} provides prompt insights and real-time results for comprehensive cardiac profiling pre and post procedure:

- Offers dual-modality advancement with 4D Auto Contouring of both ventricular chambers in TEE
- Enables analysis for irregular heartbeats and the ability to edit frames, AVC, and Pre-A. The ability to quantify and average up to five beats. Plus, analysis without ECG (single beat).
- Can attain up to 96% accuracy in detecting LV ED and ES volumes through 4D Heart^{AI}¹, supporting precise clinical data acquisition

AI Measure allows one-click Doppler analysis of one cardiac beat or multiple.

Trace^{AI} automatically measures circumference and max/min diameters, providing precise contours of orifice-type structures on MPRs, with an overall accuracy of more than 95%.

¹ Algorithm Study Report Unified Heart pg. 23 and 24.
Comparison for chamber volumes between manual and auto+edits for LVEDV and LVESV.

Clear

Exceptional image clarity

ACUSON Origin boasts superb image quality with alternative imaging capabilities, setting a new standard in cardiac ultrasound.

AcuNav Lumos 4D ICE catheter – Intracardiac echocardiography (ICE) for unsurpassed visualization and precise guidance:

- Enhanced MPR Bi-Plane and improved image quality in 2D, MPR, and 4D imaging
- Dedicated Bi-Plane control on the ACUSON Origin for streamlined 4D workflow
- Introduction of 3D Calipers and labeled markers for anatomical identification and measurements during procedures
- Enhanced real-time 4D color flow Doppler with one of the leading volume rates in the industry for advanced detail visualization
- Provide alternative imaging options for patients not suitable for TEE or moderate sedation

AcuNav Crystal 2D ICE catheter on the ACUSON Origin ultrasound system:

- Exceptional clarity across anatomy with improved image quality for detecting the left atrial appendage, mitral valve, tricuspid valve, papillary muscles, and aortic valve
- Dedicated ICE system workflow that's easier for any clinician to use and can reduce procedure time
- Substrate characterization for papillary muscles, along with tissue, anatomical location, and thickness

UltraArt is a unique feature that enables users adjust images and select from multiple levels of image processing with one touch. It reduces speckle and enhances contrast to deliver realistic tissue presentation with patient-specific adaptation.

InFocus imaging eliminates reliance on traditional focal zones, ensuring consistent sharpness across the entire image. Seamlessly encompasses the depth range from near to far field, designed to set a new industry benchmark. Outpaced competitors by eight years in integrating this groundbreaking innovation first.

AutoFlash artifact suppression technology effectively limits flashing and ghosting color artifacts due to motion without requiring user interaction. Restores conventional image processing when motion stops, helping ensure clarity and precision.

Easy

Workflow redefined

Simplify your workflow with the ACUSON Origin's user-centric design, offering:

- Intuitive touch screen and controls positioned for effortless access
- Ergonomically designed console reducing repetitive motion, ensuring ease of use
- Customizable workflows to optimize efficiency for doctors, sonographers, and patients
- Lighter¹, smaller¹, and easily maneuverable, making the system highly adaptable



¹ Compared to ACUSON SC2000

For purchase or inquiries of the AcuNav Crystal 2D ICE catheter, contact Johnson & Johnson MedTech:
USA (+1-909-839-8500 and +1-800-729-9010),
Belgium +32-2-352-1411,
Asia Pacific +(65) 6827-6100

Unleash the power of precision with ACUSON Origin and 2D/4D ICE

Experience the future with the ACUSON Origin and AcuNav 2D/4D ICE catheters. Elevate your structural heart procedures with clarity, image quality, and efficiency. Don't settle for limitations – embrace the technology that pushes boundaries and empowers your practice to achieve exceptional patient outcomes.

Don't miss what your ultrasound should have shown you. Benefit from a dedicated ICE workflow for streamlined ease of use and discover breakthrough image quality for detecting valves and intracardiac structures.

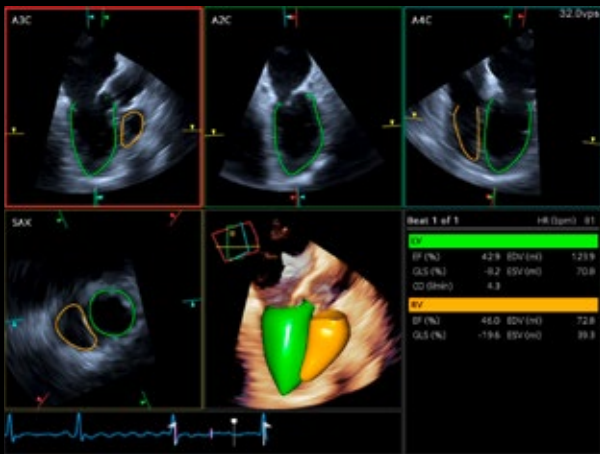
Contact us today to learn more about how the ACUSON Origin can transform your approach to structural heart interventions.



Spotlight: Structural heart image guidance

Siemens Healthineers has sold over 2 million catheters and over 25 years of pioneering 2D and 4D ICE.

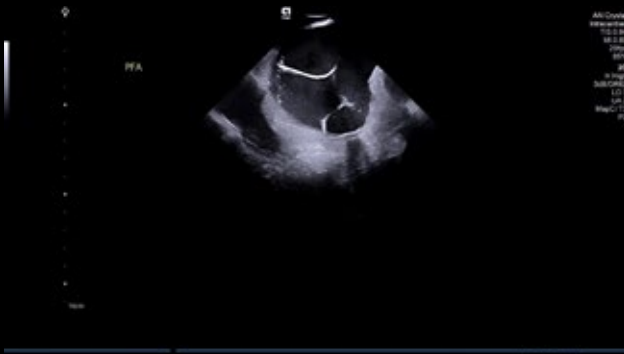




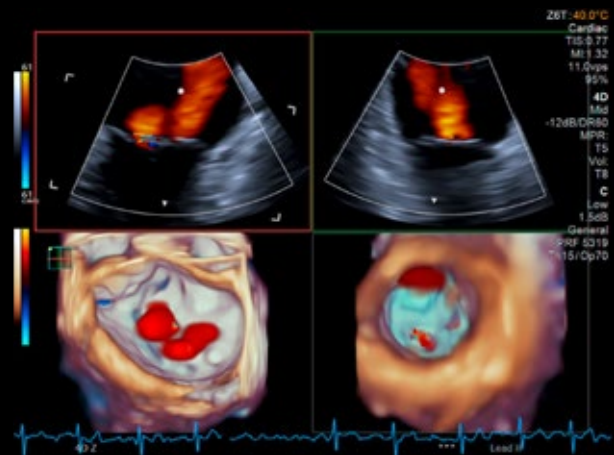
4D Heart™ illustrating feature functionality to contour both ventricles simultaneously and dynamically at 32 VPS.



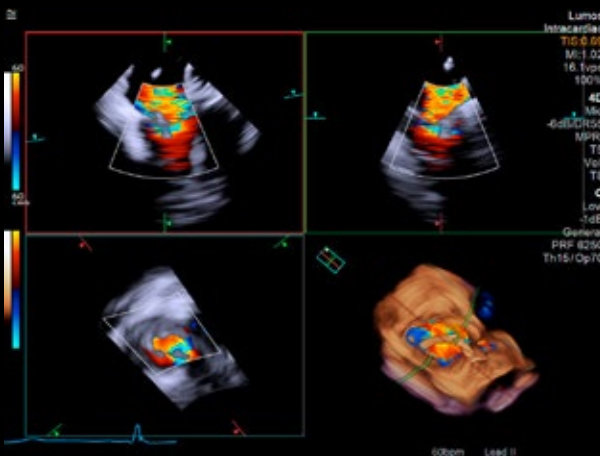
TEE imaging with color Doppler post Watchman placement follow-up, noting a para-device leak.



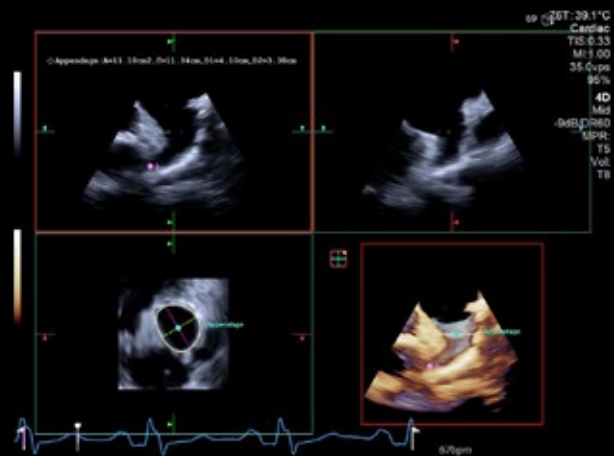
AcuNav Crystal 2D ICE imaging of a PFA procedure. Note the image quality, definition and resolution of the PFA and mapping catheters in the left atrium.



4D TEE image illustrates the color definition and clarity in both the MPRs and the 4D imaging looking from the LA (left) and from the LV (right) with 4D color, noting two distinct jets.



AcuNav Lumos 4D ICE image demonstrating significant TR in MPRs as well as the realtime 4D color volume imaging at 16.1 VPS.



Trace™ with AcuNav Lumos provides precise sizing of the left atrial appendage for occluder device placement, measuring max/min diameters and circumference for accurate device sizing.

The information in this document contains general technical descriptions of specifications and options as well as standard and optional features, which do not always have to be present in individual cases.

Siemens Healthineers reserves the right to modify the design, packaging, specifications, and options described herein without prior notice. For the most current information, please contact your local sales representative from Siemens Healthineers.

Note: Any technical data contained in this document may vary within defined tolerances. Original images always lose a certain amount of detail when reproduced.

The products/features mentioned in this document may not be commercially available in all countries. Due to regulatory reasons their future availability cannot be guaranteed. Please contact your local Siemens Healthineers organization for further details. Standalone clinical images may have been cropped to better visualize pathology.

All trademarks are the property of their respective owners.

At Siemens Healthineers, we pioneer breakthroughs in healthcare. For everyone. Everywhere. Sustainably. As a leader in medical technology, we want to advance a world in which breakthroughs in healthcare create new possibilities with a minimal impact on our planet. By consistently bringing innovations to the market, we enable healthcare professionals to innovate personalized care, achieve operational excellence, and transform the system of care.

Our portfolio, spanning in vitro and in vivo diagnostics to image-guided therapy and cancer care, is crucial for clinical decision-making and treatment pathways. With the unique combination of our strengths in patient twinning¹, precision therapy, as well as digital, data, and artificial intelligence (AI), we are well positioned to take on the greatest challenges in healthcare. We will continue to build on these strengths to help overcome the world's most threatening diseases, enable efficient operations, and expand access to care.

We are a team of 73,000 Healthineers in over 70 countries passionately pushing the boundaries of what is possible in healthcare to help improve the lives of people around the world.

¹ Personalization of diagnosis, therapy selection and monitoring, after care and managing health.

Siemens Healthineers Headquarters

Siemens Healthineers AG
Siemensstr. 3
91301 Forchheim, Germany
Phone: +49 9191 18-0
siemens-healthineers.com

Manufacturer

Siemens Medical Solutions USA, Inc.
Ultrasound
22010 S.E. 51st Street
Issaquah, WA 98029, USA
Phone: 1-888-826-9702
siemens-healthineers.com/ultrasound