



Assay Menu

Atellica NEPH 630, BN ProSpec, and BN II Systems

siemens-healthineers.com

The Atellica® and BN™ family of plasma protein testing solutions is a tightly integrated, high-performance combination of analyzers, assays, scientific expertise, and customer support dedicated to the specific needs and requirements of mid- to high-volume plasma-protein testing. Siemens Healthineers plasma protein systems deliver accurate results and provide a complete disease-state picture for better clinical outcomes. With over 70 assay protocols available, the Siemens Healthineers solution delivers diagnostic performance for confident decision making.

Polyclonal and Monoclonal Gammopathies/Immune System

B2-Microglobulin
FLC kappa
FLC lambda
Ig/Light Chain, type kappa
Ig/Light Chain, type lambda
IgA
IgD*
IgG
IgG subclasses 1-4
IgM

Kidney Disease

α1-Microglobulin urine
α2-Macroglobulin urine
B2-Microglobulin urine
B-trace protein
Albumin urine
Cystatin C
FLC kappa urine
FLC lambda urine
Ig/Light Chain, type kappa urine
Ig/Light Chain, type lambda urine
IgG urine
Transferrin urine

Inflammation

α1-Acid Glycoprotein
CRP
Fibrinogen
SAA

Autoimmune/Rheumatoid Diseases

ADNase B
ASL
Calprotectin*
C3c
C4
CRP
RF
TNFa Inhibitors (adalimumab, infliximab, etanercept)

Cardiovascular Risk/Acute Cardiac Care

Albumin urine
Apo A-I
Apo B
Cystatin C
Fibrinogen
High Sensitivity CRP (CardioPhase® hsCRP)
Homocysteine
Lp(a)
Myoglobin

Chronic Alcohol Abuse

CDT (Carbohydrate-deficient Transferrin)
Transferrin (for %CDT calculation)

Allergic Diseases

IgE

Nutritional Assessment

Albumin
CRP
Ferritin
Prealbumin
RBP (Retinol-binding Protein)

Coagulation Disorders

AT-III
Fibrinogen
Plasminogen

Anemia/Iron Metabolism

Ferritin
Haptoglobin
Hemopexin
sTfR (Soluble Transferrin Receptor)
Transferrin

Complement Activity

C1 Esterase Inhibitor
C1q*
C3c
C3 Proactivator*
C4
C5*

Blood-CSF Barrier Dysfunction

Albumin
Albumin CSF
B-trace Protein (CSF leakage)
FLC kappa CSF
FLC lambda CSF
IgA
IgA CSF
IgG
IgG CSF
IgM
IgM CSF

Other Specialty Analytes

α1-Antitrypsin
α2-Macroglobulin serum
Apo A-II
Apo E
Ceruloplasmin
Fibronectin

*Alliance application manufactured by third party, distributed by Siemens Healthcare Diagnostics Inc.

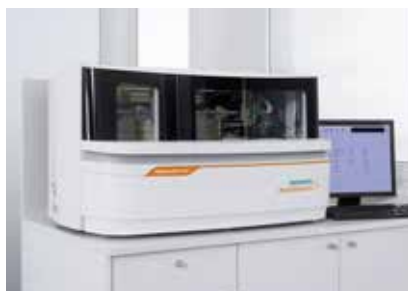
At Siemens Healthineers, our purpose is to enable healthcare providers to increase value by empowering them on their journey toward expanding precision medicine, transforming care delivery, and improving patient experience, all made possible by digitalizing healthcare.

An estimated 5 million patients globally benefit every day from our innovative technologies and services in the areas of diagnostic and therapeutic imaging, laboratory diagnostics, and molecular medicine, as well as digital health and enterprise services.

We are a leading medical technology company with over 120 years of experience and 18,000 patents globally. Through the dedication of more than 50,000 colleagues in 75 countries, we will continue to innovate and shape the future of healthcare.

Atellica, BN, BN ProSpec, *CardioPhase*, and all associated marks are trademarks of Siemens Healthcare Diagnostics Inc., or its affiliates. All other trademarks and brands are the property of their respective owners.

Product availability may vary from country to country and is subject to varying regulatory requirements. Please contact your local representative for availability.



Atellica® NEPH 630 System



BN ProSpec® System



BN™ II System



Discover
e-learning,
competency-
based education,
and webinars
on PEPConnect.

Siemens Healthineers Headquarters

Siemens Healthcare GmbH
Henkestr. 127
91052 Erlangen, Germany
Phone: +49 9131 84-0
siemens-healthineers.com

Published by

Siemens Healthcare Diagnostics Inc.
Laboratory Diagnostics
511 Benedict Avenue
Tarrytown, NY 10591-5005
USA
Phone: +1 914-631-8000