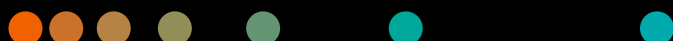


Study protocol

Fixation of pelvic fractures

Ortho/trauma surgery



Courtesy of

Universitätsklinikum Erlangen,
Germany

System

CIARTIC Move self-driving mobile
3D C-arm

Case description

Patient history

Male, age group 31–45 years

Diagnosis

Right iliac bone fracture
(Figs. 1–6)

Surgical procedure

Open reduction and internal fixation
of the right iliac fracture (Letournel)
(Figs. 1–6)

Conclusion

Implementing the correct standard
projections of the pelvis is very
important when assessing the

intraoperative reduction and implant
position. With CIARTIC Move, these
positions can be saved before or
during surgery. The surgeon or the
OR staff can return the system to
the stored positions at the touch of
a button, using the PositionAssist
function on the Smart Control.

Tips and tricks

Save the standard projections
preoperatively, including the
collimation if necessary, and recall
these positions intraoperatively to
save time.

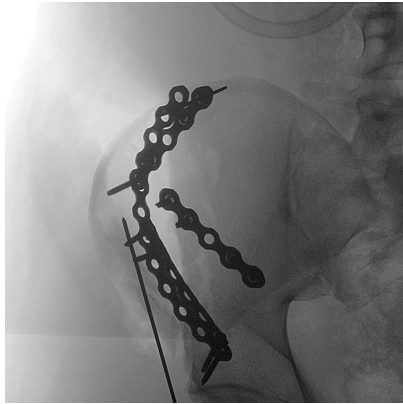
Clinical images

Figure 1



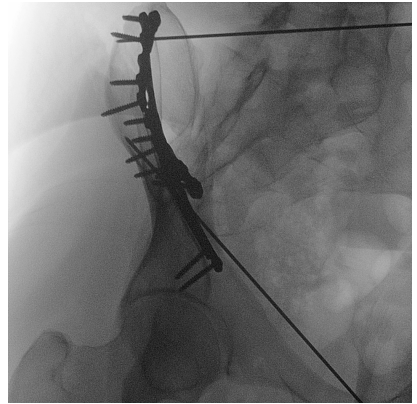
Approach and save the position for an anterior-posterior projection.

Figure 2



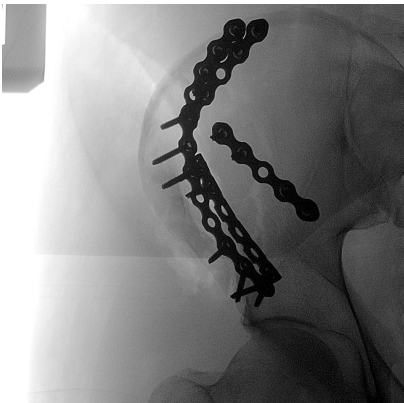
Press the button to return to the saved position to check the placement of the plates and wires. Anterior view.

Figure 3



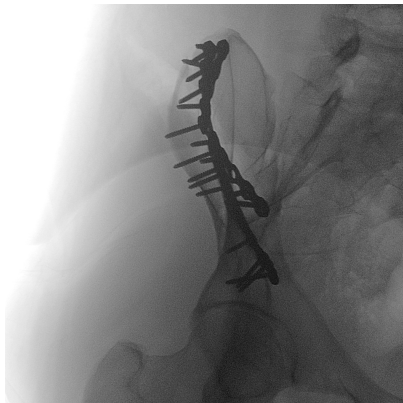
Return to a saved position in the obturator oblique view to confirm the placement of the implants.

Figure 4



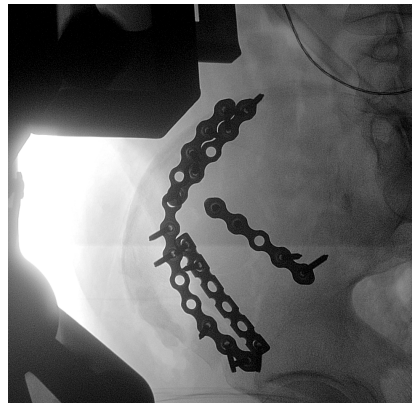
Drive to the saved position to examine the final placement of the plates and screws. Anterior view.

Figure 5



Inspect the final placement in the saved obturator oblique view.

Figure 6



Inspect the final placement in the saved iliac oblique view.

The information presented in the study protocol is for illustration only and is not intended to be relied upon by the reader for instruction as to the practice of medicine. Any health care practitioner reading this information is reminded that they must use their own learning, training and expertise in dealing with their individual patients. This material does not substitute for that duty and is not intended by Siemens Healthineers to be used for any purpose in that regard.

The statements by customers of Siemens Healthineers presented here are based on results that were achieved in the customer's unique setting. Since there is no "typical" hospital and many variables exist (e.g., hospital size, case mix, level of IT adoption), there can be no guarantee that other customers will achieve the same results.

On account of certain regional limitations of sales rights and service availability, we cannot guarantee that all products included in this case are available throughout the Siemens Healthineers sales organization worldwide.

All rights reserved.

Siemens Healthineers Headquarters

Siemens Healthineers AG
Siemensstr. 3
91301 Forchheim, Germany
Phone: +49 9191 18-0
[siemens-healthineers.com](https://www.siemens-healthineers.com)