

MAGNETOM Altea

Confidence to deliver

siemens-healthineers.com/altea



SIEMENS
Healthineers 

MAGNETOM Altea gives you full confidence to deliver

MAGNETOM Altea is the scanner designed to give you full confidence to deliver the productivity, reproducibility, and patient satisfaction that you demand.

Built on our most powerful 1.5T platform, MAGNETOM Altea adapts to your needs so that you can rise to the most demanding challenges.

It puts cutting-edge AI at your fingertips to accelerate and enhance your performance.

Powered by myExam Companion and our unique BioMatrix technology, the system enables you to perform with confidence and consistency through each step of the MRI workflow.

With a clear focus on financial sustainability, MAGNETOM Altea also gives you full confidence that your MR asset will deliver the expected returns on investment. Throughout the entire system life cycle, Siemens Healthineers provides you with tailored products and services that guarantee future security.



Transform your care delivery

At the core of our revolutionary MRI system lies a magnetic design unparalleled in strength and efficiency, setting new benchmarks in diagnostic imaging.

MAGNETOM Altea is designed to fundamentally transform care delivery in your clinical key areas and provide financial sustainability.



Ultra-high performance 1.5T magnet

Strong gradient's system

Tim 4G

Scalable, **high-performance** coil portfolio

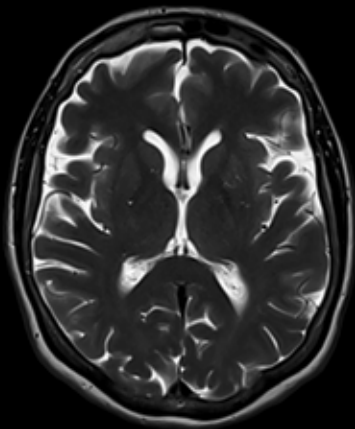


Faster than ever before

Deep Resolve is at the forefront of the deep learning revolution in MRI with Deep Resolve Boost & Sharp. These technologies use deep neural networks in the reconstruction process to achieve faster scans than ever before, while simultaneously increasing image sharpness and resolution. Across multiple clinical applications, Deep Resolve can further be combined with our unique acceleration technologies such as Simultaneous Multi-Slice (SMS) to produce images of superior quality in a fraction of the acquisition time, a true paradigm shift in MR imaging.



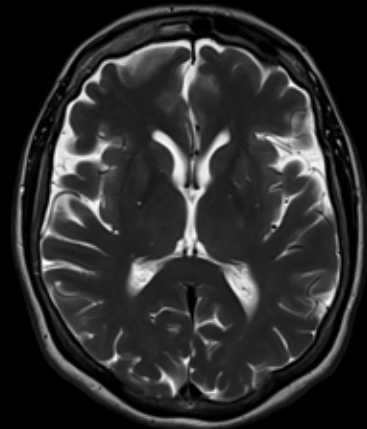
Conventional



50%
faster

2x
resolution

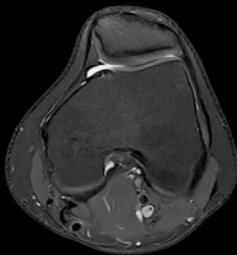
Deep Resolve



ID1aaaa4361

T2 TSE
PAT 2
 $0.4 \times 0.4 \times 5.0 \text{ mm}^3$
TA 0:52 min

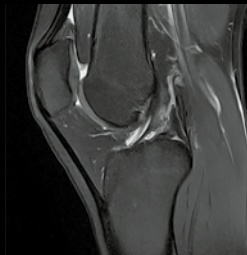
T2 TSE
PAT 4
 $0.2 \times 0.2 \times 5.0 \text{ mm}^3$
TA 0:26 min



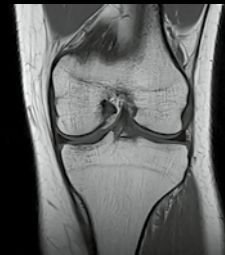
PD TSE fs
PAT 3, SMS 2, **Deep Resolve**
 $0.3 \times 0.3 \times 3 \text{ mm}^2$
TA 1:00 min



PD TSE fs
PAT 3, SMS 2, **Deep Resolve**
 $0.3 \times 0.3 \times 3 \text{ mm}^2$
TA 0:50 min



PD TSE fs
PAT 3, SMS 2, **Deep Resolve**
 $0.3 \times 0.3 \times 3 \text{ mm}^2$
TA 0:43 min



PD TSE fs
PAT 3, SMS 2, **Deep Resolve**
 $0.3 \times 0.3 \times 3 \text{ mm}^2$
TA 0:36 min

1aaaa3995

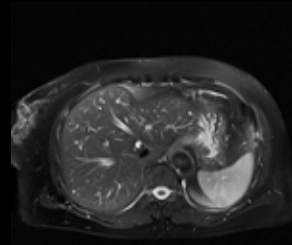
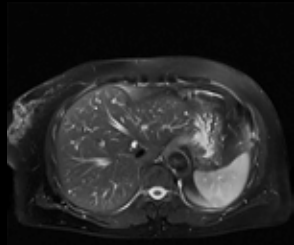


A complete knee examination in 3 min scan time

Deep Resolve – excellent image quality and acquisition speed

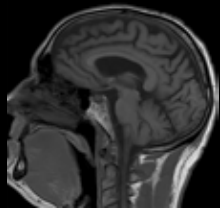
T2 HASTE fs
Deep Resolve

0.5 × 0.5 × 6.0 mm³
TA 0:22 min
Single breath-hold

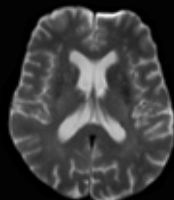


EPI Diffusion, b800
Deep Resolve

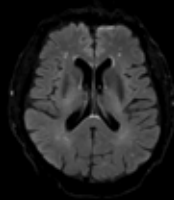
PAT 3
1.4 × 1.4 × 6.0 mm³
TA 0:59 min



T1 flash
PAT 2
0.5 mm × 0.5 mm × 5mm²
TA 0:30 min

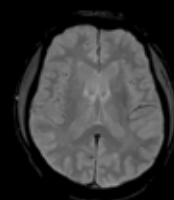


Epi diffusion
PAT 2
0.7 mm × 0.7 mm × 5 mm²
TA 1:02 min

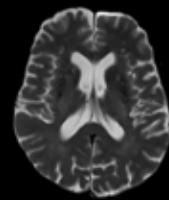


T2 dark fluid
PAT 2
1 mm × 1 mm × 5mm²
TA 1:22 min

Simultaneous Acquisition



T2*
PAT 2
0.9 mm × 0.9 mm × 5 mm²
TA 0:24 min



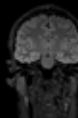
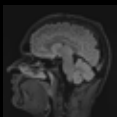
T2



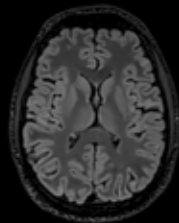
A complete head examination in 3:26 min scan time with Deep Resolve Swift Brain

Boost speed and image quality in all dimensions

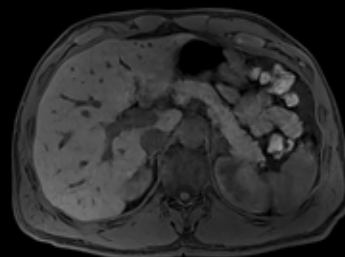
To unlock a new dimension of speed and clarity in 3D MRI. Planned Deep Resolve for SPACE and VIBE.⁴



T2 FLAIR SPACE
CAIPI 4, Deep Resolve
0.5 mm iso
TA 3:22 min



1aaaa4655

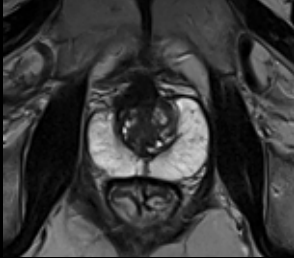


VIBE fs
CAIPI 4, Deep Resolve
0.6 mm iso
TA 0:13 min
Single breath-hold

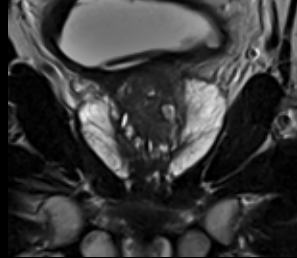
Courtesy of Jones Radiology at Calvary Adelaide Hospital, Adelaide Australia

Beyond speed. New clinical possibilities

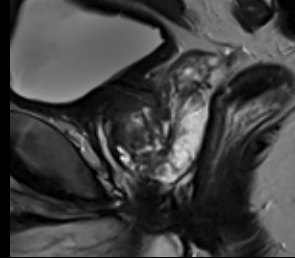
Advanced Prostate MRI – Fast, high image quality, and focused on Your Health.



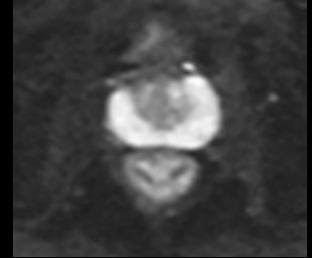
1aaaaa5026
T2 TSE
PAT 4, **Deep Resolve**
0.4 × 0.4 × 3 mm²
TA 0:50 min



T2 TSE
PAT 4, **Deep Resolve**
0.4 × 0.4 × 3 mm²
TA 0:41 min



T2 TSE
PAT 4, **Deep Resolve**
0.4 × 0.4 × 3.5 mm²
TA 0:49 min

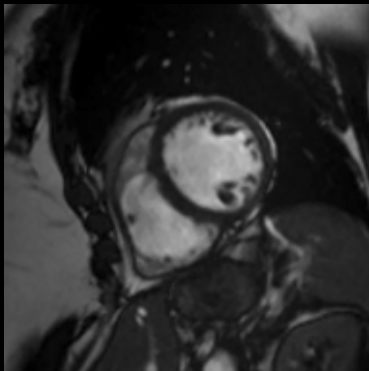


Diffusion (calc. b1000)
PAT 4, **Deep Resolve**
01 × 01 × 3.5 × 3 mm²
TA 1:44 min



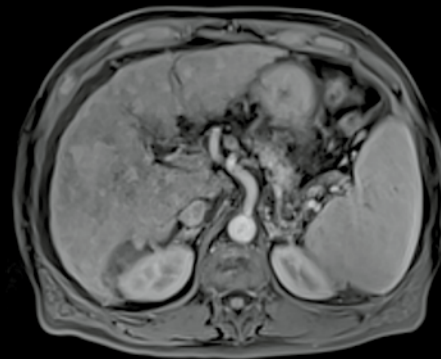
A complete prostate examination in 4:04 min scan time with Deep Resolve

Disruptive imaging technologies, such as Compressed Sensing GRASP VIBE and Compressed Cardiac Cine allows more patients to benefit from advanced diagnostic capabilities



Compressed Sensing Cardiac Cine
0.5 mm iso
TA 2:59 min

New!



Compressed Sensing GRASP-VIBE
0.5 mm iso
TA 2:59 min

1aaaaa2010

A workflow built around humans

The MRI workflow revolves around the interaction between the patient, technologist, and the system. We prioritize designing our technologies to optimize this connection for efficiency and comfort.



Discover **BioMatrix Technology**, our cutting-edge MRI technology designed to seamlessly adapt to each patient's unique anatomy and physiology, ensuring customized solutions for optimal outcomes.



Unlock effortless MRI workflows with **myExam Companion**. Its innovative technologies simplify MR operations, and boost efficiency for seamless imaging experiences.



Patient centered experience: Efficiency and comfort in perfect synergy

MAGNETOM Altea offers a holistic environment of solutions that put the patient at ease whilst simplifying the workflow



BioMatrix Sensors

Utilizing our smart and integrated sensors for automatic detection of respiratory and cardiac motion to trigger scans.



BioMatrix Select&Go

Using AI to streamline the patient positioning workflow

New!

Patient registration, positioning, and start scan are now designed to be performed directly at the patient's side*



myExam 3D Camera

Captures the patient's shape, position on the table, and height in three dimensions, making patient positioning up to 48% faster.

A scalable, high-performance coil portfolio allows you to tailor the system to the specific demands of your institution



New!

BioMatrix Contour XL coil⁴ with extra-large coverage of 60 cm x 90 cm, including a rotating cable connection and integrated **BioMatrix Sensors**.



BioMatrix Head/Neck coil with 20 channels. Tiltable coil with DirectConnect and integrated **BioMatrix CoilShim**.



Dedicated **MSK coils** such as our TxRx Knee 18 coil provide high-resolution imaging and superior patient comfort.

Intelligent guidance for imaging excellence

MAGNETOM Altea with **myExam Companion** offers assisted scan workflows that enable reliable imaging results. Using the new possibilities of digitalization and AI, data is turned into integrated expertise and tailored assistance.

myExam Assist

Flexible and guided

myExam Assist offers a semi-automated scan workflow that assists the user with smart automation while maintaining full flexibility to tailor the workflow to their needs.

Over 90%⁵
of MRI exams
are covered by
myExam Assist

Offering tailored
scan strategies



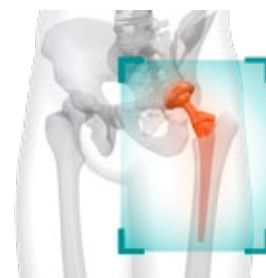
Automated slice
alignment using
anatomical
landmarks enables
consistency

Adjustable scan
parameters

myExam Implant Suite⁴

Our solution ensures a straightforward setup for implant scanning.

- Seamlessly integrate with the registration process.
- Facilitates simple setting of SAR or B1+rms limits and gradient slew rate per axis for MRI examinations, especially for patients with implants.

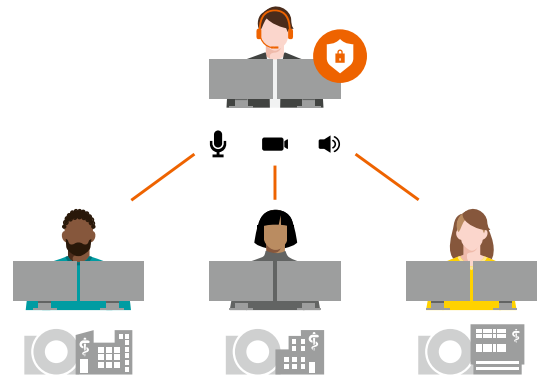


syngo Virtual Cockpit⁶

Move knowledge, not staff!

Support MRI, CT, PET, and SPECT Scans remotely – independent of location!

- Experts can assist with up to 3 scans simultaneously
- Care teams stay connected through chat, audio, and video
- Easy protocol management from virtually anywhere



myExam Autopilot

Automate intelligently

myExam Autopilot offers a fully automated scan workflow including a streamlined user interface for the easiest and quickest MRI exam.

Scan with virtually a simple click of a button

A simplified user interface to keep the focus on what matters



For consistent results – no matter the user, patient, or workload



AI-powered technologies

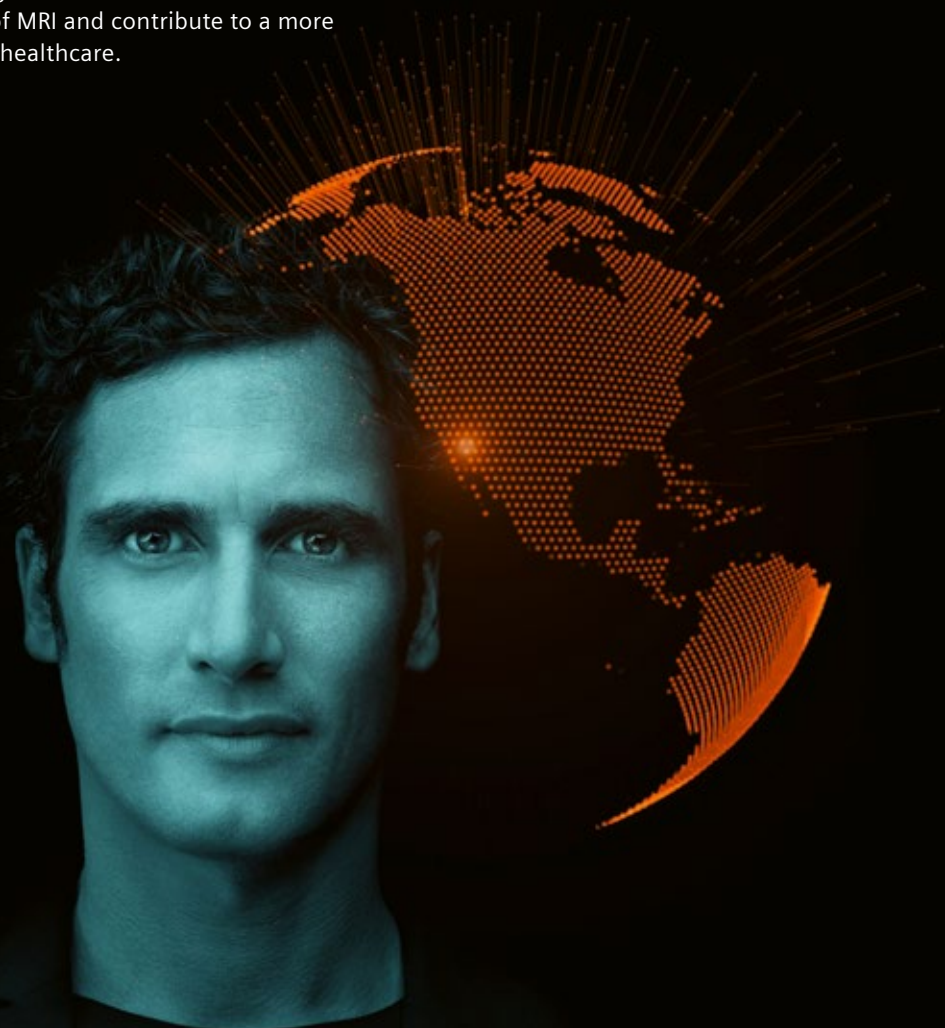
myExam Assist and myExam Autopilot have AI integrated for consistent image quality



Toward a sustainable future

At Siemens Healthineers we want to work together with you to positively impact not only the well being of your patients but equally ensure that we use our planet's resources responsibly.

We provide technological solutions that reduce the ecological footprint of MRI and contribute to a more sustainable future in healthcare.



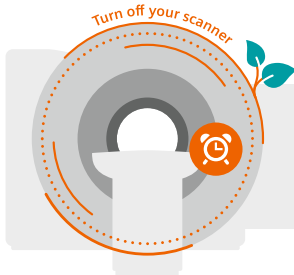
Scan the code or visit
[siemens-healthineers.com/magnetic-resonance-imaging/sustainability-in-mri](https://www.siemens-healthineers.com/magnetic-resonance-imaging/sustainability-in-mri)
to find out more

MAGNETOM Altea offers energy saving technologies that holistically apply to daily operations

How MAGNETOM Altea saves energy:

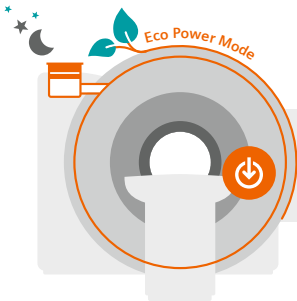
Energy consumption for an MRI system in one year, if the scanner is always on⁷:

~ 100 MWh



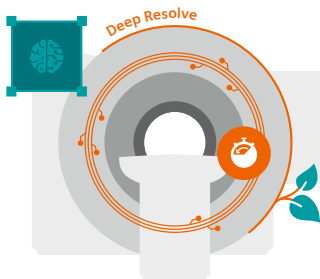
Save ~20% energy by turning off your scanner when not in use⁸

~ 80 MWh



Save ~12% energy by using Eco Power Mode⁹

~ 70 MWh



Save ~13% energy by using Deep Resolve⁹

~ 60 MWh



Did you know?

The start-up time for our scanners is only approx. 5.5 minutes and with our System Start-Up Timer you can enable automatic start-ups of your scanner in the morning. So your system is ready when the workday starts!

Make the most of our innovations and save ~ 40% energy!



Stay connected to be one step ahead

While you focus on caring for your patients, we take care of your scanner

Our comprehensive services solutions
Individual and everywhere



Guardian Program

Maximize your equipment uptime with our continuous multi-dimensional monitoring 24/7



Our service plans

Enhance your possibilities and stay protected



Hybrid Learning

Flexible educational solutions



Scan the code or visit
[siemens-healthineers.com/
services/customer-services](https://www.siemens-healthineers.com/services/customer-services)
to find out more

On account of certain regional limitations of sales rights and service availability, we cannot guarantee that all products included in this brochure are available through the Siemens Healthineers sales organization worldwide. Availability and packaging may vary by country and are subject to change without prior notice. Some/All of the features and products described herein may not be available in the United States. Some products are still under development and not commercially available yet. Their future availability cannot be ensured.

The information in this document contains general technical descriptions of specifications and optional features which do not always have to be present in individual cases. Siemens Healthineers reserves the right to modify the design, packaging, specifications, and options described herein without prior notice. Please contact your local Siemens Healthineers sales representative for the most current information.

Note: Any technical data contained in this document may vary within defined tolerances. Original images always lose a certain amount of detail when reproduced.

⁴ *The product is still under development and not commercially available. Its future availability cannot be ensured.*

⁵ *Data on file.*

⁶ *syngo Virtual Cockpit is not yet commercially available in all countries and the service offering cannot be guaranteed due to regulatory or other reasons. Please contact your local Siemens Healthineers organization for further details. Precondition: Expert-i enabled or KVM switch connected modalities and appropriately trained personnel operating under applicable federal, state, and local laws as to the specific imaging modality(ies), including radiation and contrast. .*

⁷ *Results were achieved by Siemens Healthineers using both standard and optional features. There can be no 'typical' hospital setting (case mix, system type, etc.) and so results by users may vary with no guarantee that the same results can be achieved.*

⁸ *Values are computed for a MAGNETOM Sola XQ system for illustration purposes.*

⁹ *Results are quantified assuming scanning operations as per COCIR standards.*

Siemens Healthineers Headquarters

Siemens Healthineers AG
Siemensstr. 3
91301 Forchheim, Germany
Phone: +49 9191 18-0
[siemens-healthineers.com](https://www.siemens-healthineers.com)