

## Methotrexate II Assay

# Advancing personalized methotrexate treatment

Atellica DT 250 Analyzer and Atellica CH 930\* and Atellica CI<sup>†</sup> Systems

### Methotrexate Monitoring in Oncology and Autoimmune Disorders

On-label uses of methotrexate (MTX) include treatment of some types of solid tumors, blood cancers, and lymphomas. In 2019, approximately 200,000 patients worldwide had a need for high-dose MTX therapy.<sup>1</sup> High-dose MTX therapy can be highly cytotoxic and carries risk of severe or fatal damage to the kidneys, liver, heart, GI tract and skin.<sup>2</sup> In addition, low-dose MTX is considered a first line of treatment for many autoimmune inflammatory disorders such as rheumatoid arthritis and systemic lupus erythematosus.<sup>3</sup>

From high- to low-dose MTX therapy, laboratory testing plays a critical role in patient care.

### Methotrexate II Assay Benefits

- Provides fully validated and supported Alliance Application of the Methotrexate II Assay for the Atellica DT 250 Analyzer and Atellica CH 930\* and Atellica CI<sup>†</sup> Systems, using trusted EMIT-like technology.
- Monoclonal antibodies provide high specificity with strong precision, linearity, and sensitivity.
- Extended range<sup>‡</sup> enables faster high-dose MTX monitoring with fewer manual dilutions, while sensitive low-level detection supports accurate clearance assessment and safer patient management.
- Lower cross-reactivity<sup>‡</sup> with structurally related 7-hydroxymethotrexate ( $\leq 0.01\%$ ) helps prevent false-positive results.
- Contains liquid-stable, ready-to-use reagents, eliminating the need for manual preparation, dilution, and complex mixing.

### Clinical Utility

The duration of methotrexate exposure is a key determinant of toxicity. Direct monitoring of methotrexate levels in serum or plasma is therefore essential to prevent harmful accumulation.<sup>4,5,6,7</sup>

**Individualized treatment regimens improve therapeutic target achievement in acute lymphoblastic leukemia patients.**

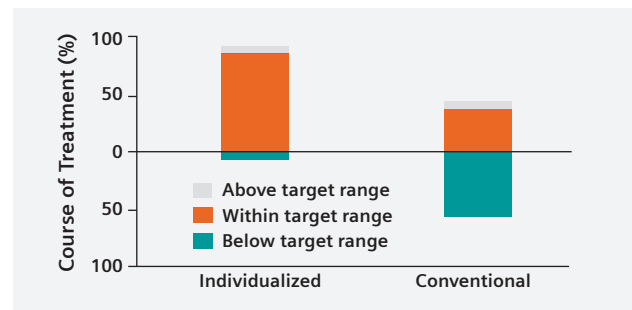


Figure 1. Percentage of treatment courses falling above, within, and below the targeted clearance range in individualized vs. conventional therapy.<sup>8</sup>

### Higher rate of remission in patients receiving individualized treatment

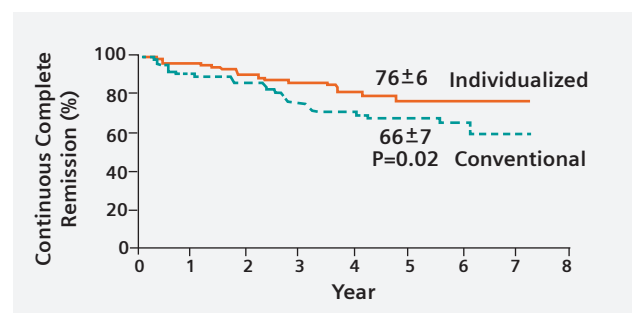


Figure 2. Kaplan-Meier curve demonstrated greater rate of continuous complete remission in individualized vs. conventional treatment regimens.<sup>8</sup>

\*Validated application pending upcoming software release

†Under development

‡Compared to ARK Methotrexate Assay

## Healthcare Impact

### Essential monitoring for treatment

Methotrexate treatment prevents harmful toxicity and results in patient compliance.<sup>1</sup>

### Enhanced assay performance

Improved on-board stability<sup>†</sup> helps improve operational efficiency, minimize costs, and ensure result accuracy.

### Making methotrexate monitoring routine

Simplifies integration into your clinical laboratory workflow.

## Assay Specifications

	Atellica DT 250 Analyzer	Atellica CH 930 System
Assay principle	Homogenous Enzyme Immunoassay Technique (HEIA)	Homogenous Enzyme Immunoassay Technique (HEIA)
Sample types	Serum or plasma	Serum or plasma
Sample volume	8 µL	17.5 µL
Analytical measuring range	0.030 – 1.300 mmol/L	0.030 – 1.300 mmol/L
Limit of blank	0.006 µmol/L	0.001 µmol/L
Limit of detection	0.010 µmol/L	0.003 µmol/L
Limit of quantitation	0.030 µmol/L	0.030 µmol/L
Reagent onboard stability	30 days	60 days
Calibration Stability	14 days	14 days
Time to first result	10 minutes	7 minutes

## Ordering Information

Material Description	SMN No.	Contents
ARK MTX II Assay Kit 16 mL	11834726	R1 16 mL / R2 8 mL
ARK MTX II Calibrators Kit	11834728	6 x 4 mL
ARK MTX II Complete Control Set	11834729	3 x 4 mL; 3 x 2 mL
ARK MTX II Low-Medium-High Control	11834730	3 x 4 mL
ARK MTX II 5-50-500 High Control	11834731	3 x 2 mL
ARK MTX II Dilution Buffer	11834732	25 mL

## References:

1. Howard SC, Ilbawi AM, Lewis B, Lam C. Forecasting the global need for high-dose MTX to prevent and mitigate shortages. *Journal of Clinical Oncology*. 2019;37(15\_suppl):6571-6571.
2. Howard SC, McCormick J, Pui CH, Buddington RK, Harvey RD. Preventing and managing toxicities of high-dose MTX. *Oncologist*. Dec 2016;21(12):1471-1482.
3. Kane S. Methotrexate: Drug Usage Statistics, United States, 2014- 2023. ClinCalc.com. Updated 4/15/2025. Accessed 2/16/2026, 2026. <https://clincalc.com/drugstats/Drugs/Methotrexate>
4. Bielack SS, Soussain C, Fox CP, et al. A European consensus recommendation on the management of delayed MTX elimination: *J Cancer Res Clin Oncol*. Oct 2 2024;150(10)
5. Evans WE, Pratt CB, Taylor RH, Barker LF, Crom WR. Pharmacokinetic monitoring of high-dose MTX. *Cancer Chemother Pharmacol*. 1979;3(3):161-6.
6. Benboudiaf S, Bouchala F, Kouloughli K, Yamoun A, Redouane H, A. B. High-Dose Methotrexate (Hd-Mtx) : Therapeutic drug monitoring of patients followed at The Toxicology Department of the University Hospital of Setif, Algeria Pharmacy and Drug Development 2024;3(2)
7. SAGE IVD. Memorandum: Request for advice from the expert committee on selection and use of essential medicines on prioritization of medicines. Accessed December 16, 2025, 2025. [https://cdn.who.int/media/docs/default-source/essential-medicines/2021-eml-expert-committee/other-matters/o.3\\_tdm-edl.pdf?sfvrsn=3e4e7953\\_4](https://cdn.who.int/media/docs/default-source/essential-medicines/2021-eml-expert-committee/other-matters/o.3_tdm-edl.pdf?sfvrsn=3e4e7953_4)
8. Evans WE, Relling MV, Rodman JH, Crom WR, Boyett JM, Pui CH. Conventional compared with individualized chemotherapy for childhood acute lymphoblastic leukemia. *N Engl J Med*. Feb 19 1998;338(8):499-505.

All trademarks are the property of their respective owners. Product availability may vary from country to country and is subject to varying regulatory requirements. Please contact your local representative for availability.

## Siemens Healthineers Headquarters

Siemens Healthineers AG  
Siemensstr. 3  
91301 Forchheim, Germany  
Phone: +49 9191 18-0  
[siemens-healthineers.com](http://siemens-healthineers.com)

## Published by

Siemens Healthcare Diagnostics Inc.  
Specialty Lab Solutions  
511 Benedict Avenue  
Tarrytown, NY 10591-5005  
USA  
Phone: +1 914-631-8000