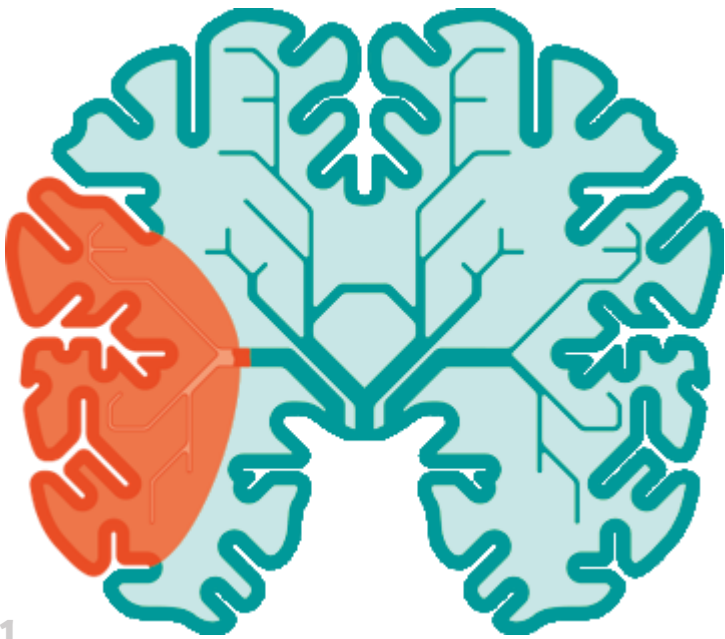


# STROKE

## FACTS AND FIGURES

SYMPTOMS  
PALSY  
NAUSEA  
VERTIGO  
SENSORY LOSS  
BLURRED  
SPEECH  
WEAKNESS  
LOSS OF VISION <sup>1</sup>



12.2 million  
new strokes per year  
one every 3 seconds <sup>2</sup>



2<sup>nd</sup> leading  
cause of death worldwide <sup>2</sup>



101 million people worldwide are  
living with stroke aftermath <sup>2</sup>

6.5 million people die  
as a result of stroke each year <sup>2</sup>



Ischemic stroke

87%

Hemorrhagic stroke <sup>3</sup>

13%

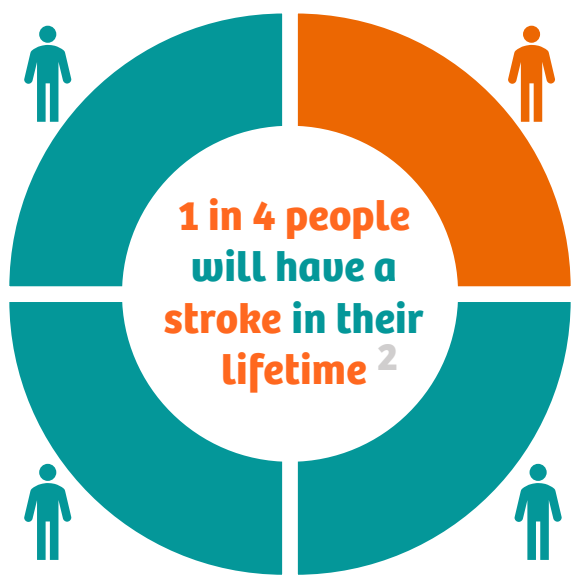


In 2019, 63% of strokes  
occurred in people  
younger than 70 years <sup>2</sup>

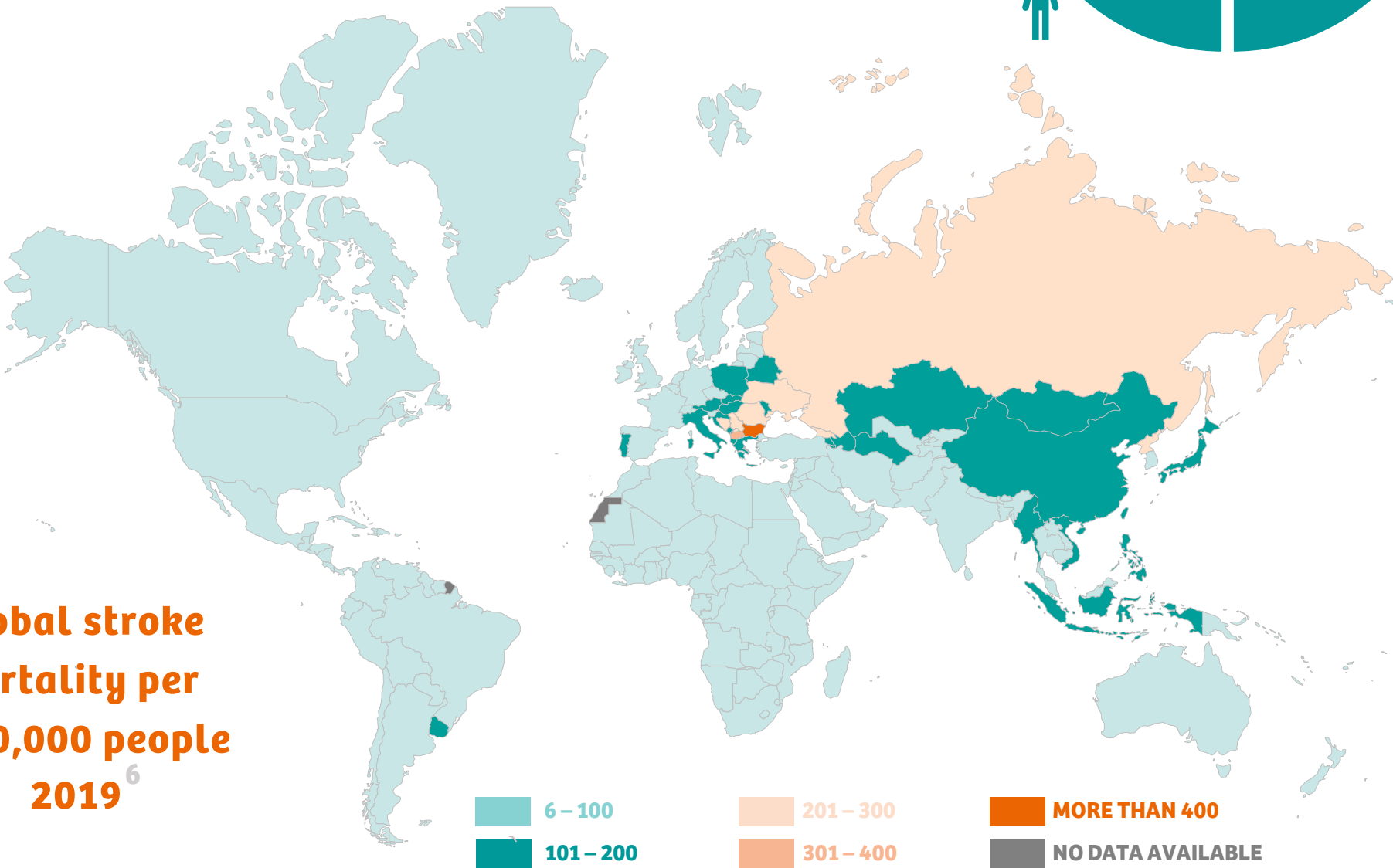


143 million DALYS  
due to stroke <sup>4</sup>

In 2020, 1 in 6 deaths  
from cardiovascular disease  
were due to stroke in the US <sup>5</sup>



Global stroke  
mortality per  
100,000 people  
2019 <sup>6</sup>



Disclaimer: The Disease Pathways Framework could be used to elaborate on various diseases. The various pain points, solutions, and statistical data are examples only and cannot be taken as recommendations for the reader.

1. WebMD, Stroke Signs and Symptoms, medically reviewed by Dr. James Beckerman, MD, FACC <https://www.webmd.com/stroke/guide/understanding-stroke-symptoms>  
2. World Stroke Organization (WSO): Global Stroke Fact Sheet 2022 [https://www.world-stroke.org/assets/downloads/WSO\\_Global\\_Stroke\\_Fact\\_Sheet.pdf](https://www.world-stroke.org/assets/downloads/WSO_Global_Stroke_Fact_Sheet.pdf)  
3. Johns Hopkins Medicine, Types of Stroke, <https://www.hopkinsmedicine.org/health/conditions-and-diseases/stroke/types-of-stroke>  
4. Global, regional, and national burden of stroke and its risk factors, 1990–2019: a systematic analysis for the Global Burden of Disease Study 2019 [https://www.thelancet.com/journals/laneur/article/PIIS1473-4422\(21\)00252-0/fulltext](https://www.thelancet.com/journals/laneur/article/PIIS1473-4422(21)00252-0/fulltext)  
5. National Center for Chronic Disease Prevention and Health Promotion, Division for Heart Disease and Stroke Prevention <https://www.cdc.gov/stroke/facts>  
6. Stroke Mortality per 100,000 people in 2019, both sexes, all ages. <https://vizhub.healthdata.org/gbd-compare/>



# STROKE

## Disease pathway analysis with painpoints and solution examples

An extensive research-based analysis from 40+ scientific articles and journals in combination with hospital workflow experience allowed the identification of pain points and solutions.

These solutions were proposed based on AI, IoMT, AR/VR, biosensors, nanorobotics and smart wearable technologies.

THROUGH THIS CAREPLAN WE HIGHLIGHT DATA FROM A COLLECTION OF

116  
Painpoints

157  
Solutions

13  
connected to  
different stakeholders

- Solution categories
- Existing in healthcare sector
  - Ongoing research in healthcare
  - Futuristic solution (may or may not be implemented)

Disclaimer: The Disease Pathways Framework could be used to elaborate on various diseases. The various pain points, solutions, and statistical data are examples only and cannot be taken as recommendations for the reader.

