

Study Protocol

syngo DynaCT of the pulmonary arteries

Interventional Radiology



syngo DynaCT can provide additional information about chronic embolism by depicting web stenoses and occlusions.

Courtesy of

PD Dr. B. Meyer,
Institute for Diagnostic and
Interventional Radiology,
Medical School Hannover,
Germany

Supported by

syngo DynaCT

System & Software

Artis Q ceiling VD10
syngo X Workplace VC10

Case Description

Patient history

Patient with history of recurrent pulmonary embolism and chronic thromboembolic pulmonary hypertension (CTEPH). Pulmonary angiogram and *syngo DynaCT* were acquired for diagnostic work-up.

Diagnosis

CTEPH with perfusion defects and web stenoses mainly in the right lung.

Treatment

Diagnostic workup.

General comments

Pulmonary angiograms are still the established gold standard for diagnostic workup in patients with CTEPH. *syngo DynaCT* can provide additional information about chronic embolism by depicting web stenoses and occlusions.

Tips and tricks

Selective *syngo DynaCT* imaging can be performed in case of insufficient contrast using a central catheter position.

syngo DynaCT of the pulmonary arteries

Acquisition protocol	6sDCT Body
-----------------------------	-------------------

Injection protocol

Catheter position	Central catheter position
Contrast medium (CM)	300 mg iodine/mL
Dilution (CM/Saline):	70 %
Injection volume	60 mL
Injection rate	8 mL/s
Duration of injection	7.5 s
X-ray delay	1.5 s
Power injector used	Yes

Reconstructions

Primary

Name	DynaCT Body Nat Fill HU
VOI size	Full
Slice matrix	512 × 512
Kernel type	HU
Image characteristics	Normal
Reconstruction mode	Nat fill
Viewing preset	DynaCT Body

Clinical Images



Figure 1: Thick MIP 23 mm
Web stenosis in lower right lobe (white arrow)

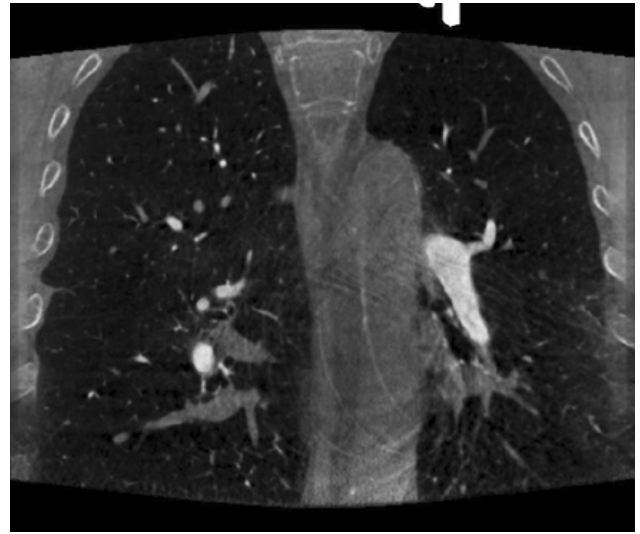


Figure 2: Thick MIP 23 mm
Small Web stenosis in left lobe (white arrow)

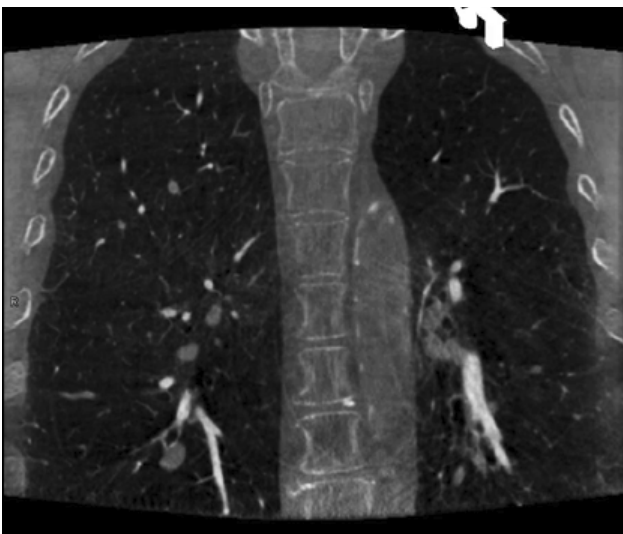


Figure 3: Thin MPR

Siemens Healthineers Headquarters

Siemens Healthcare GmbH
Henkestr. 127
91052 Erlangen, Germany
Phone: +49 9131 84-0
siemens-healthineers.com

The statements by Siemens' customers presented here are based on results that were achieved in the customer's unique setting. Since there is no "typical" hospital and many variables exist (e.g., hospital size, case mix, level of IT adoption), there can be no guarantee that other customers will achieve the same results.

On account of certain regional limitations of sales rights and service availability, we cannot guarantee that all products included in this case are available throughout the Siemens sales organization worldwide.

All rights reserved.