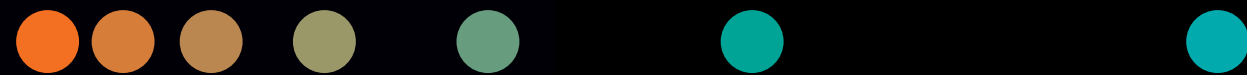


Lung Cancer Pathway Portfolio

➤ siemens-healthineers.us/lungcancer





Why Siemens Healthineers?

When caring for lung cancer patients, you need technology that can help you make confident decisions, streamline workflows, and potentially, improve outcomes. With deep expertise in imaging, diagnostics, digital innovation, and oncology, we can help.

Our technologies are designed to help you detect disease earlier, stage it more accurately, and treat it more effectively. **Our goal is to empower you and your teams to focus on what matters most: your patients.**

Content

Lung Cancer Care Pathway

1

Screening

>

2

Diagnosis & Staging

>

3

Therapy decision, planning & treatment

>

4

Monitoring & survivorship

>

5

Services

>

Contents

- Screening
- Diagnosis & Staging
- Therapy decision, planning & treatment
- Monitoring & survivorship
- Services



Screening

Our industry-leading low-dose CT scanners can deliver high-quality imaging with minimal radiation, which can support safer and more effective lung cancer screening. Our ultra-low-dose CT scanners and AI tools can also support accurate and confident screening outcomes.

Low-dose CT Scanners

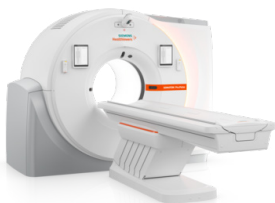
NAEOTOM Alpha class



Elevate your diagnostic capabilities across a wide range of clinical scenarios with the NAEOTOM Alpha class, which includes three advanced photon-counting CT systems. Backed by proven Quantum Technology and AI-powered productivity solutions, these systems can help you overcome the limitations of conventional CT and set a new standard of care for your patients.

[> Show me how](#)

SOMATOM Pro.Pulse



Get the speed and precision you need to reduce motion artifacts, even in your most challenging cases with the SOMATOM Pro.Pulse. Its dual source technology and myExam Companion features can make scanning easier for both you and your patients.

[> Show me how](#)

SOMATOM X.platform



Meet rising demands and support your workflow and your team with high-resolution, high-speed, and low-dose imaging. The SOMATOM X.platform brings intelligent imaging to your fingertips. With myExam Companion and myNeedle Companion, you get guided support that helps users of all skill levels make confident clinical decisions and get the most out of your system.

[> Show me how](#)

SOMATOM go.platform

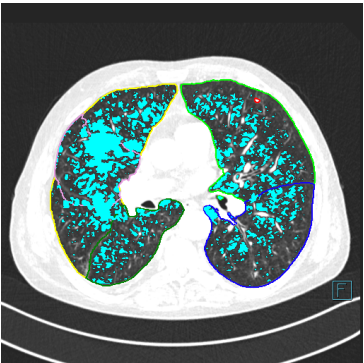


From routine to advanced procedures, SOMATOM go.platform combines AI-supported workflows to ease your team's workload, expanded capabilities to meet your patients' needs, and seamless integration to align with your goals.

[> Show me how](#)

Smart AI tools

AI-Rad Companion



Use AI-powered reading software to automatically detect and highlight subtle lung nodules. Acting as a second pair of eyes can help reduce false negatives and missed tumors. Its consistent, data-driven analysis also minimizes false positives, avoiding unnecessary follow-ups and improving diagnostic confidence.

[> Show me how](#)

Contents

- Screening
- Diagnosis & Staging
- Therapy decision, planning & treatment
- Monitoring & survivorship
- Services



Diagnosis & Staging

To support confident clinical decisions, we offer advanced imaging systems, biopsy guidance solutions, and intelligent software tools that work together. From characterizing nodules to assessing lymph node involvement and metastasis, our technologies can provide the clarity and consistency needed to move forward with timely and effective care.

Imaging: CT

NAEOTOM Alpha class



Elevate your diagnostic capabilities across a wide range of clinical scenarios with the NAEOTOM Alpha class, which includes three advanced photon-counting CT systems. Backed by proven Quantum Technology and AI-powered productivity solutions, these systems can help you overcome the limitations of conventional CT and set a new standard of care for your patients.

[Show me how](#)

SOMATOM go.platform



From routine to advanced procedures, SOMATOM go.platform combines AI-supported workflows to ease your team’s workload, expanded capabilities to meet your patients’ needs, and seamless integration to align with your goals.

[Show me how](#)

SOMATOM X.platform

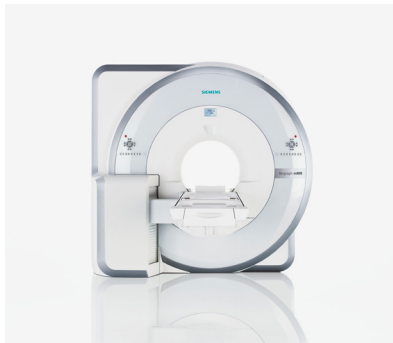


Meet rising demands and support your workflow and your team with high-resolution, high-speed, and low-dose imaging. The SOMATOM X.platform brings intelligent imaging to your fingertips. With myExam Companion and myNeedle Companion, you get guided support that helps users of all skill levels make confident clinical decisions and get the most out of your system.

[Show me how](#)

Imaging: PET/MR

Biograph mMR



With Biograph mMR, you can simultaneously capture morphology, function, and metabolism in a single scan. This system seamlessly integrates state-of-the-art 3T MRI with advanced molecular imaging. Whole-body MR and PET are fully aligned, giving you precise, comprehensive insights to support more confident clinical decisions.

[Show me how](#)

Imaging: Biograph PET/CT family

Biograph Trinion



Biograph PET/CT systems are designed to help you diagnose, treat, monitor and research disease more confidently. With strong foundational technology, digital detectors, and artificial intelligence (AI)-enabled capabilities, as well as enhanced image quality and optimized workflows, Biograph PET/CT scanners help you provide the best clinical services for your patients.

[Show me how](#)

¹Data on file.

Contents

Screening

Diagnosis & Staging

Therapy decision,
planning & treatment

Monitoring & survivorship

Services



Diagnosis & Staging (continued)

Biopsy & Staging

Bronchoscopy



With image-guided robotic bronchoscopy, you may navigate small, hard-to-reach lung lesions with greater accuracy and control. This advanced solution combines robotic-assisted guidance with real-time imaging to support you in performing precise, minimally invasive biopsies.

[Show me how](#)

myNeedle Companion

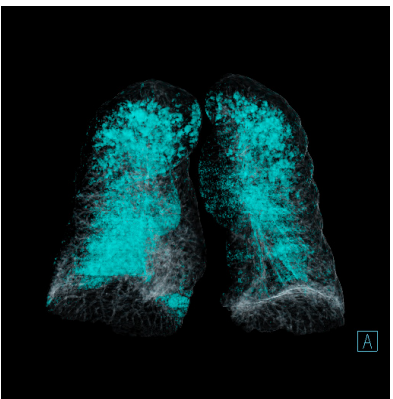


To help simplify and standardize CT-guided interventional procedures, myNeedle Companion brings together intelligent planning and guidance tools in a single, intuitive interface to help you perform needle-based interventions with greater accuracy and efficiency. With support for all Siemens Healthineers CT scanners and a consistent user experience across systems, myNeedle Companion can help you streamline workflows, reduce variability, and focus more on your patients.

[Show me how](#)

Software

AI-Rad Companion



By automatically post-processing medical images using advanced AI algorithms, AI-Rad Companion can integrate smoothly into your workflow by sending results directly to systems like your PACS workstation. Supporting modules such as Chest CT, AI-Rad Companion gives you consistent, reliable insights to support faster and more confident clinical decisions.

[Show me how](#)

Syngo Carbon



Disconnected systems and fragmented data can delay clinical decisions. Our enterprise imaging solution, Syngo Carbon, brings everything together—creating a single point of consistency with a reading and reporting workspace, combined with open image and data management, all within one unified platform. Teams can quickly access what they need, when they need it, and work more efficiently across the entire care pathway.

[Show me how](#)

Contents

- Screening
- Diagnosis & Staging
- Therapy decision, planning & treatment
- Monitoring & survivorship
- Services

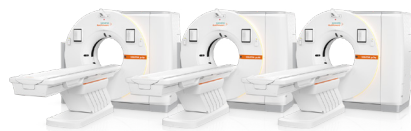


Therapy decision, planning & treatment

We support your lung cancer treatment strategy with a comprehensive portfolio of imaging, interventional, and radiation therapy solutions. From image-guided minimally invasive procedures to advanced radiation oncology systems, our technologies can help you deliver precise, personalized care.

Imaging: Radiation therapy planning

SOMATOM go.platform



From routine to advanced procedures, SOMATOM go.platform combines AI-supported workflows to ease your team’s workload, expanded capabilities to meet your patients’ needs, and seamless integration to align with your goals.

[Show me how](#)

Biograph mCT Sim edition



Make standardized protocols and personalized scans possible. And transform complex procedures, like PET motion-free imaging, with a click of a button thanks to Biograph™ mCT Sim edition. It features a large bore and intelligent imaging applications that can streamline your 4D CT workflow by automatically setting optimal scan parameters based on the patient’s breathing cycle.

[Show me how](#)

Imaging: CT-guided interventional procedures

myNeedle Companion



With myNeedle Companion, you can harmonize planning and guidance for percutaneous needle procedures with a unified workflow and user interface for angiography and CT systems. Visualize critical anatomical structures with image fusion that seamlessly combines data from multiple modalities. Integrated software-assisted path planning and guided insertion simplify both routine and complex procedures. In addition, the integrated laser guidance system, myNeedle Laser, visualizes the needle entry point and angle for you, to help increase efficiency and reduce outcome variations.

[Show me how](#)

Imaging: Treatment planning

SOMATOM go.Open Pro



The SOMATOM go.Open Pro features Direct i4D, which generates clear 4D CT images for radiation therapy planning. It tracks breathing patterns in real time to help create a personalized 4D treatment plan. Lung ventilation measurements provide insights into lung function, enabling radiation oncologists to adjust the plan to better protect healthy tissue. DirectSetup Notes captures and documents patient positioning and accessories, ensuring both accuracy and efficiency.

[Show me how](#)

Imaging

Artis pheno



Designed for hybrid operating rooms and interventional radiology suites, ARTIS pheno is a state-of-the-art robotic C-arm imaging system that helps you builds insights to meet the evolving demands of complex procedures. Its versatile design adapts seamlessly to current workflows while anticipating future needs. With ARTIS pheno, you may broaden your case mix and tackle challenges with confidence and precision.

[Show me how](#)

Cios Spin



The Cios Spin offers 2D fluoroscopy and true cone-beam CT (3D) imaging, providing real-time visualization of pulmonary lesions and precise tool-in-lesion confirmation. Designed to support lung cancer procedures, it enables accurate targeting and verification during transbronchial biopsies and other interventional pulmonology techniques. Integrated with Intuitive’s Ion Robotic Bronchoscopy system, the Cios Spin sets the gold standard for interventional pulmonologists.

[Show me how](#)

Artis zee



With industry-leading imaging and dose-management tools, Artis zee is a versatile imaging platform built on the PURE® architecture. Its ceiling-mounted design delivers full-body coverage and soft-tissue DynaCT from every angle. In lung cancer therapy and treatment it guides precise tumor ablations, targeted biopsies and airway stent placements with clear 3D visualizations of small nodules and vessels. It also adapts seamlessly to interventional oncology workflows.

[Show me how](#)

continued >>

Contents

Screening

Diagnosis & Staging

Therapy decision,
planning & treatment

Monitoring & survivorship

Services



Therapy decision, planning & treatment (continued)

Radiography: Varian

TrueBeam



TrueBeam offers advanced technology that helps you deliver high-dose radiation precisely, while protecting healthy tissue. Whether you're treating early-stage tumors or complex cases, TrueBeam supports your speed and accuracy by giving you tools to streamline your workflow, enhance patient comfort, and support better outcomes.

[> Show me how](#)

Radiography: Software

syngo
DynaCT



syngo DynaCT gives you real-time 3D imaging of soft tissue, bone, and devices directly in your angio suite. This can help you guide lung procedures with greater precision and accuracy while keeping your patient in place for a smoother, more efficient workflow.

[> Show me how](#)

myNeedle
Companion



With myNeedle Companion, you can harmonize planning and guidance for percutaneous needle procedures with a unified workflow and user interface for angiography and CT systems. You can visualize critical anatomical structures thanks to image fusion that seamlessly combines data from multiple modalities. And thanks to integrated software-assisted path planning and guided insertion, both routine and complex procedures can be simplified. In addition, the integrated laser guidance system, myNeedle Laser, visualizes the needle entry point and angle for you, to help increase efficiency and reduce outcome variations.

[> Show me how](#)

syngo.via RT
Image Suite



A user-friendly software companion for radiation oncology teams, syngo.via RT Image Suite weaves simulation, image assessment and contouring into a seamless flow so you can sculpt radiation fields around lung tumors with precision. It harmonizes daily tasks and elevates treatment planning beyond the usual standard. In lung cancer therapy it refines tumor boundaries, guides adaptive workflows as anatomy shifts and helps ensure each fraction lands exactly where you intend.

[> Show me how](#)

Contents

Screening

Diagnosis & Staging

Therapy decision,
planning & treatment

Monitoring & survivorship

Services



Monitoring & survivorship

To support therapy monitoring and follow-up care, we offer solutions that enable accurate follow-up imaging, early identification of potential recurrence, and better communication between care teams and patients. By empowering both providers and patients with the tools needed for ongoing engagement, we can help support long-term health outcomes and a more personalized survivorship experience.

Low-dose CT Scanners

NAEOTOM Alpha class



Elevate your diagnostic capabilities across a wide range of clinical scenarios with the NAEOTOM Alpha class, which includes three advanced photon-counting CT systems. Backed by proven Quantum Technology and AI-powered productivity solutions, these systems can help you overcome the limitations of conventional CT and set a new standard of care for your patients.

[Show me how](#)

SOMATOM go.platform



From routine to advanced procedures, SOMATOM go.platform combines AI-supported workflows to ease your team's workload, expanded capabilities to meet your patients' needs, and seamless integration to align with your goals.

[Show me how](#)

SOMATOM X.platform

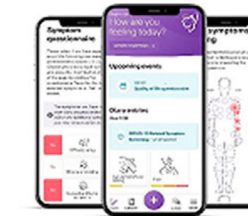


Meet rising demands and support your workflow and your team with high-resolution, high-speed, and low-dose imaging. The SOMATOM X.platform brings intelligent imaging to your fingertips. With myExam Companion and myNeedle Companion, you get guided support that helps users of all skill levels make confident clinical decisions and get the most out of your system.

[Show me how](#)

Varian

Noona mobile app



Noona is an oncology patient-engagement platform that integrates with ARIA CORE or any hospital information system to automate appointment reminders, deliver tailored education materials and share test results from diagnosis through post-treatment follow-up. In lung cancer therapy, it keeps patients connected by prompting symptom reporting, tracking side effects with photos, and alerting care teams when intervention is needed. By centralizing communication and structured wellbeing data, Noona frees clinic resources so teams can focus on personalized care and improving outcomes.

[Show me how](#)

Contents

- Screening
- Diagnosis & Staging
- Therapy decision,
planning & treatment
- Monitoring & survivorship

Services



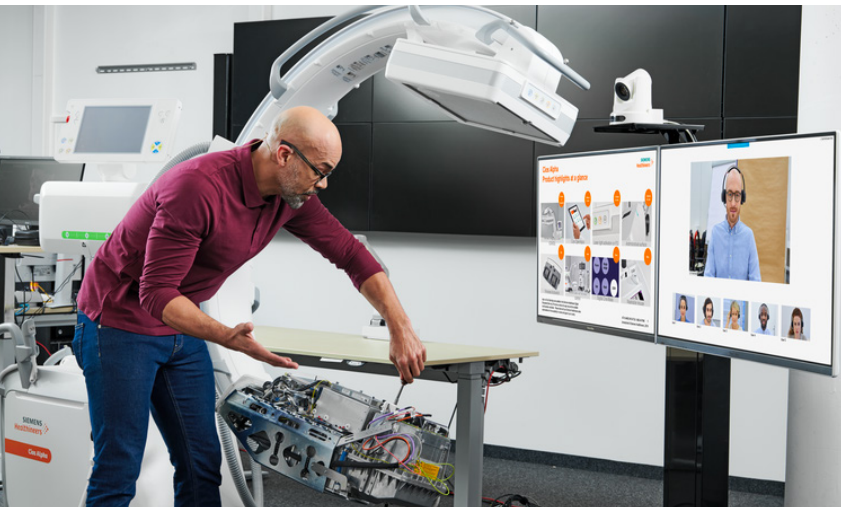
Services

Equipment Services



Protecting equipment availability is essential to delivering timely diagnostics and treatments. Our portfolio of customizable service agreements is designed to help keep your systems ready to support patients across the lung cancer care pathway.

Education & Workforce Solutions



Effective lung cancer screening and treatment starts with the right expertise and resources, empowering your team to deliver precise, high-quality patient care. Our clinical education offerings help you maximize system capabilities, stay ahead of evolving technology, and build a skilled, confident workforce. Paired with our specialized staffing solutions, you can bridge workforce gaps and maintain continuity of care, ensuring your team always has the expertise and support needed to perform at their best.

Siemens Healthineers pioneers breakthroughs in healthcare. For everyone. Everywhere. Sustainably. The company is a global provider of healthcare equipment, solutions and services, with activities in more than 180 countries and direct representation in more than 70. The group comprises Siemens Healthineers AG, listed as SHL in Frankfurt, Germany, and its subsidiaries. As a leading medical technology company, Siemens Healthineers is committed to improving access to healthcare for underserved communities worldwide and is striving to overcome the most threatening diseases. The company is principally active in the areas of imaging, diagnostics, cancer care and minimally invasive therapies, augmented by digital technology and artificial intelligence. In fiscal 2024, which ended on September 30, 2024, Siemens Healthineers had approximately 73,000 employees worldwide and generated revenue of around €22.4 billion.

Further information is available at www.siemens-healthineers.com.

The outcomes and statements provided by customers of Siemens Healthineers are unique to each customer’s setting. Since there is no “typical” hospital and many variables exist (e.g., hospital size, case mix, and level of service/technology adoption), there can be no guarantee that others will achieve the same results.

On account of certain regional limitations of sales rights and service availability, we cannot guarantee that all products included in this brochure are available through the Siemens Healthineers sales organization worldwide. Availability and packaging may vary by country and is subject to change without prior notice. Some/All of the features and products described herein may not be available in the United States.

The information in this document contains general technical descriptions of specifications and options as well as standard and optional features, which do not always have to be present in individual cases.

Siemens Healthineers reserves the right to modify the design, packaging, specifications, and options described herein without prior notice. For the most current information, please contact your local sales representative from Siemens Healthineers.

Note: Any technical data contained in this document may vary within defined tolerances. Original images always lose a certain amount of detail when reproduced.

Siemens Healthineers Headquarters

Siemens Healthineers AG
Siemensstr. 3
91301 Forchheim, Germany
siemens-healthineers.com

USA

Siemens Medical Solutions USA, Inc.
Healthcare
40 Liberty Boulevard
Malvern, PA 19355-9998, USA
siemens-healthineers.us