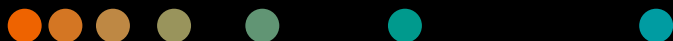


Coronary CTA Interpretation Workshop

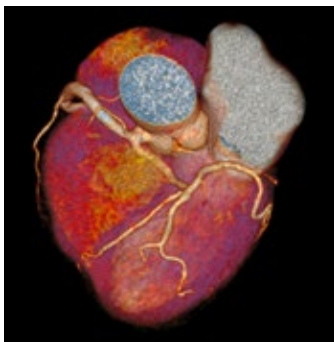
University of Erlangen, Germany



Course design and objectives

The focus of the course is to provide participants with hands-on experience in the interpretation of coronary CT angiography data sets. During the 2 days, participants will have the opportunity to use image interpretation workstations and evaluate 50 original coronary CT angiography scans, in compliance with AHA level II certification requirements, ranging from easy, introductory cases to more advanced cases with difficult diagnoses and typical pitfalls. Invasive coronary angiography correlation will be available for every CT angiography case.

Two participants will jointly work on one workstation and the faculty will be available to provide help and guidance.



Courtesy of University of Erlangen, Erlangen, Germany

University of Erlangen-Nuremberg

The University Hospital in Erlangen-Nuremberg, with its 33 departments and institutes, covers the entire spectrum of modern medicine. These facilities are complemented by a series of clinical theory institutes. International cooperations at a scientific and industrial level ensure that both diagnostics and therapy as well as research and teaching are up-to-date.

The Department of Internal Medicine II covers the complete spectrum in the fields of cardiology and angiography in terms of medical care, research, and teaching. Specifically in the field of cardiac CT, the department cooperates closely with the Institute of Medical Physics and the Institute for Diagnostic Radiology. The department has state-of-the-art medical imaging equipment and provides a comprehensive range of diagnostic examinations and therapeutic interventions in the field of cardiology and angiography. With innovative technology, especially concerning cardiac imaging, non-invasive visualization of the coronary vessels, and interventional catheter-based therapy, the clinic assumes a leading role in this specialized area.

[siemens.com/SOMATOEducate](https://www.siemens.com/SOMATOEducate)

Coronary CTA Interpretation Workshop

University of Erlangen, Germany

Date details:

November 04-05, 2021

Course hours:

Thursday: 8:15 a.m. to 6:00 p.m.

Friday: 8:15 a.m. to 4:30 p.m.

Meeting point on Thursday 8:00 a.m.:

Room A0123

Hotel:

Please contact:

ct.clinical-workshop.team@siemens-healthineers.com
for hotel recommendation

Course director and content responsible:

Professor Stephan Achenbach, MD

Head of Department of Cardiology

Participants:

The course is most suited for cardiologists and radiologists who have basic knowledge of cardiac computed tomography and want to improve their interpretation skills and gather experience with recognizing typical and somewhat more difficult findings.

Number of participants:

5–12 (maximum)

Costs:

The course fee is €1,750.– excl. VAT including:

- Course material
- Coffee breaks
- Lunch breaks

Location:

Department of Internal Medicine II
Friedrich-Alexander University Hospital
Erlangen-Nuremberg
Ulmenweg 18
D-91054 Erlangen
Germany
Phone: +49 9131-8 53 50 00
Fax: +49 9131-8 53 53 17

Registration:

ct.clinical-workshop.team@siemens-healthineers.com

Siemens Healthineers Headquarters

Siemens Healthcare GmbH

Henkestr. 127

91052 Erlangen, Germany

Phone: +49 9131 84-0

siemens-healthineers.com